

PROGRAMME GUIDE

CONTENTS

ABOUT AMU

Background	2
Core Values	3
Teaching & Learning	4
International Recognition	5
Our Campus	6
Living in Johor Bahru	7
Living in Bandar Seri Alam	7
Accommodation & Support Facilities	7
Learning Facilities	8
Student Experience & Learning (SELS)	10
AMUnited	11
Developing Research Excellence	12
Scholarship & Financial Aid	13
Academic Leaders	14

UNDERGRADUATE PROGRAMMES

Foundation in Business Studies	16
Foundation in Science	17
Foundation In Information Technology	18
Diploma in Business Administration	19
Diploma in Information Technology	20
Diploma in Accounting	21
Diploma in Nursing	22
Diploma in Healthcare Management	23
Bachelor of Business Administration (Hons)	24
Bachelor of Computer Science (Hons)	25
Bachelor of Accountancy (Honours)	26
Bachelor of Nursing (Hons)	27
Bachelor of Physiotherapy (Hons)	28
Bachelor of Biomedical Science (Hons)	29
Bachelor of Medicine and Bachelor of Surgery (MBBS)	30
Bachelor of Science (Hons) Healthcare Management	32
Bachelor of Information Technology (Hons)	33

POSTGRADUATE PROGRAMMES

Master of Science in Healthcare Management	35
Master in Business Administration	36
Doctor of Business Administration	38
Postgraduate Certificate in Teaching Methodology	39
Doctor of Philosophy in Management (PhD)	40



ASIA METROPOLITAN UNIVERSITY AMU

From our humble inception in 2004, Asia Metropolitan University (AMU) has grown into a full-fledged university offering a wide range of programmes which bears testimony to our impressive track record within the Malaysian private-higher education industry.

In line with the recent developments in the industry and within our institution, AMU is focused on producing trained, qualified, competent graduates for domestic and international markets in health sciences and various other disciplines. AMU aims to be “The University of Choice” within the local and global education landscape. Above all, we envision our students to come from diverse cultures and background who will be able to significantly contribute to society and mankind.

Currently, AMU provides a comprehensive educational pathway beginning from foundation and diploma studies for post-secondary school certificate holders who can then move on to pursuing undergraduate studies. Beyond that AMU also offers a wide range of masters and doctoral degree programmes.

We have revolutionised our approach to ensure the quality and delivery of our academic programmes are of the highest standards.

Besides striving for continuous improvement, we have repositioned ourselves to meet the changing landscape of the Malaysian higher education industry whereby we are committed to prepare our graduates with the right skills and knowledge to enter the competitive and challenging workforce



EMPOWERING FUTURE LEADERS

At AMU, we believe that it is vital to incorporate leadership skills and qualities among our students. As part of student support, instilling soft skills such as leadership characteristics among students has always been our foremost aspect besides providing quality education. For this reason, subjects on leadership are included in each of our programme to ensure that students develop professionalism, credibility and integrity towards becoming a future leader.



CREATING A VIBRANT CAMPUS

We have a wide range of student societies and clubs here at AMU. While providing exciting opportunities to socialise, develop new skills and learn new cultures, these student centred organisations also serve to enhance our vibrant learning community. Students create meaningful connection and memories that will continue to provide a social network for life while enhancing their educational experience at the university.

EMPHASISING EMPLOYABILITY

Our student employability is a core focus of the university in its aim to nurture “leaders”. Our dedicated employability unit is geared towards enhancing and equipping our graduates with the necessary skills set to increase their employability amidst a congested landscape, thus giving them the edge.





CHAMPIONING CONTINUOUS IMPROVEMENTS IN TEACHING & LEARNING

At AMU, we believe that when students are engaged, they learn. In support of this belief, we uphold the Kaizen principle on continuous improvement in our teaching and learning approaches to maximise the quality of student engagement. This is where our regularly scheduled classroom audits and course as well as lecturer evaluations serve as important feedback mechanisms.

Fundamentally, we believe in a student centric teaching and learning model. We recognise that our students have diverse learning styles and strive to develop the most effective teaching methodology that will optimise their learning process. To ensure an alignment between curriculum requirement and actual delivery, we also introduced a database system to manage students' clinical posting, which is a critical component of our health science programmes.



INTERNATIONAL RECOGNITION AS A UNIVERSITY

As a global university, AMU has been fully accredited by the UK-based Accreditation Service for International Schools, Colleges & Universities (ASIC) which is a mark of quality showing that the institution has reached international standards. The ASIC provides other institutional partners, our students and parents with the assurance that AMU is on a solid footing.

This also allows the university to draw on its network partners' experience and expertise in the planning and introduction of new and innovative programmes.

Our Bachelor of Medicine and Bachelor of Surgery (MMBS) programme is recognised by the Medical Council of India (MCI), Bangladesh Medical & Dental Council (BM&DC) and the Maldives Medical & Dental Council (MMDC). The recognition further cements the university's international appeal as it seeks to be a reputable name in medical education not just in Malaysia but also regionally. AMU is ready to welcome more international students with the hope of diversifying students' learning experience with a multiracial blend of culture and perspectives.



ACCREDITATION SERVICE
for
INTERNATIONAL COLLEGES



OUR CAMPUS

Expanding its reach to the south of Malaysia, Asia Metropolitan University established its Johor Bahru city campus. The southern campus seeks to be close to the rapidly growing Iskandar regional economic zone while still providing a serene and conducive learning environment away from hectic traffic.

AMU provides a comprehensive educational pathway beginning from foundation and diploma studies for post-secondary school certificate holders who can then move on to pursuing undergraduate studies. Beyond that AMU also offers a wide range of masters and doctoral degree programmes.

The Johor Bahru campus is also host to the medical programmes which allows the university to leverage on its links with nearby public hospitals thus giving our students critical exposure and experience.



LIVING IN JOHOR BAHRU, JOHOR

Johor Bahru (commonly referred to as JB) is the southernmost city in Malaysia and is Malaysia's second largest city with more than 2.7 million residents.

Johor Bahru is connected by two bridges with the neighbouring country of Singapore. The city is an important industrial, tourism and commercial hub for southern Malaysia and one of the biggest industrial centers of the country. Nearly 16 million tourists visit the city annually. Senai International Airport is located northwest of the city.



LIVING IN BANDAR SERI ALAM

Bandar Seri Alam is a booming township in Johor Bahru that is home to an ecology of educational facilities from primary school to some of the country's leading universities.

Located within the Eastern Gate Development Zone of Iskandar Malaysia, this thriving township and surrounding areas boast a population of more than 220,000. At the centre of this township lies a bustling commercial arena with various exciting like a cinema and attractive food eateries such as Starbucks, Burger King and Old Town White Coffee.



SAVE AND SECURE ACCOMMODATION & SUPPORT FACILITIES

Asia Metropolitan University (AMU) students are provided with conducive, comfortable and affordable accommodation choices. The university student hostel consists of apartments, condominiums with support facilities such as 3-tier security, swimming pool, tennis courts, laundry shop and more.

Our dedicated Student Affairs Warden, and Development Units will assist students who need special services such as medical attention, complaints and other service related matters on daily basis.



LEARNING FACILITIES

SCIENCE LABORATORIES

To add spark to the mission of education and prepare students for the competitive world, the campus has multiple well-designed laboratories that complement teaching and learning sessions conducted by highly experienced lecturers.



LECTURE HALLS

Equipped with the latest technology, AMU's lecture halls are designed to facilitate interactive learning and the use of multimedia contents to enhance student experience.



NURSING WARD

Our campus houses up-to-date, innovative facilities that simulate real situations for nursing students providing them with valuable hands-on introduction to health and social care practices.



LIBRARY

Our library is a gateway to a comprehensive collection of books, journals, periodicals, student projects and other related publications to support learning and research.



COMPUTER LABORATORIES

Students at AMU have access to state-of-the-art computer facilities that include the latest PCs and workstations with Internet connection, operating systems, software suites and commercial programming software in each IT lab.



CYBER ANATOMY 3D

Cyber Anatomy 3D offers the highest level of personal immersion, learning, and interactivity. Built upon the innovative virtual reality system, this turnkey solution provides a extraordinary experience.



ANATOMY MUSEUM

This exclusive feature of the university houses a variety of anatomical models and charts to enhance the learning experience of our healthcare students.

STUDENT EXPERIENCE & LEARNING (SELS)

Student Experience & Learning (SELS) at AMU strives to create a vibrant campus community, providing programmes and services to support students and enrich their learning experiences at Johor Bahru. Learning is enriched by the students' living environments and their engagement in a wide range of co-curricular pursuits. These activities are driven by student interests and initiatives, with Student Experience & Learning (SELS) staff providing a context conducive to their growth. This platform fosters educational and personal development for students to build on a common ground as well inspire leadership, create enthusiasm, empower and instill confidence in them.



AMUNITED

The University has developed a 1-semester co-curricular module in every programme. The AMUnited module is unique to AMU as it allows for students to learn through interactive and highly engaging extra-curricular activities. In aid of AMUnited, several clubs and societies have explored new and exciting activities that students can participate in.

These include: -

- Futsal Club
- Badminton Club
- Nursing Club
- Cultural Club
- Nature Lovers' Club and more...

The AMUnited module emphasizes on shaping students with quality leadership skills while providing exposure in organizing events at a university level. Among the events under this module include planned visits to orphanage homes, sports carnival, intervarsity competitions, festive celebrations, outdoor activities, day trips and more.

Students also get an opportunity to conduct health campaigns, attend motivational talks and leadership training camps through this module.





DEVELOPING RESEARCH EXCELLENCE

Research is the social and economic movers in the world. It is vital for South East Asia to step up its' game in research and innovation to set equal footing with the world's renowned institutions. Asia Metropolitan University encourages students to explore research areas that will enhance the society, economy and preserve our environment at the same.

Research contributes greatly to the stock of global knowledge and creates the source of new ideas, methods, techniques and innovation across a broad range of disciplinary and multi-disciplinary areas. In other words, the emphasis on social, cultural, economic and environmental impacts of research has increased greatly.

The Centre focuses on various research events to educate and equip researchers on how they can demonstrate credible research outcomes. Industry talks conducted by experts addressing topics related to Artificial Intelligence, Health Services, Strategic Leadership, Economics, Changes in Accounting and more have enabled researchers to identify areas that require improvement or development.



SCHOLARSHIP & FINANCIAL AID



GENERAL BURSARY AWARDS

Up to 30% Tuition Fee waiver for selected Degree and Diploma programmes.



MALAYSIAN FOUNDATION SCHOLARSHIP

Students who wish to enroll for Foundation programmes will be entitled for 100% scholarships and may proceed to further a degree in a related field offered by the University.
*with term & conditions



NATIONAL HIGHER EDUCATION LOAN FUND (PTPTN)

Students applying to study at Asia Metropolitan University are eligible for PTPTN funding.



AFFIN BANK

It is a Shariah-compliant scheme designed specially for qualified individuals to obtain financial assistance for their education plan. Based on the concept of Ijarah, the financing will cover their education programme for a truly seamless study experience.



KWSP
EPF

EPF WITHDRAWAL

Students enroll into AMU programmes except (Executive & Professional programmes) may apply for EPF withdrawal fund to pay their tuition fees.

ACADEMIC LEADERS



PROFESSOR DR MOHAMAD KHAN JAMAL KHAN
VICE CHANCELLOR

Professor Dr. Mohamad Khan holds an extensive record in OSH management which includes the designing of the curriculum for Occupational Health and Safety programmes for several public and private universities in Malaysia. Professor Dr. Mohamad Khan also serves on the panel of Institutional Auditors for the Malaysian Qualifications Agency (MQA). He has taught various courses in Occupational Safety and Health, Human Resource Management and Research Methodology at postgraduate and undergraduate levels and has supervised several PhD and Master's candidates in Safety and Health Management programmes. As of date, Professor Dr. Mohamad Khan has published more than 50 journal articles and presented papers and reports on occupational safety and health issues and programmes at both national and international levels.



PROF. KANAGA KUMARI
DEPUTY VICE CHANCELLOR (STUDENT
EXPERIENCE & LEARNING SUPPORT) & MQA
PANEL

Associate Professor Kanaga Kumari Chelliah graduated with a Bachelor's degree in Medical Imaging from Curtin University, Australia and attained postgraduate qualifications in Education and Medical Physics. Prof Kanaga started her career in Ministry of Health Hospital as a practicing radiographer and later joined Universiti Kebangsaan Malaysia. During her illustrious career in MOH and UKM, she held various academic and managerial positions. Prof Kanaga joined Asia Metropolitan University on 1st June 1997. She was appointed by the Malaysian Qualifications Agency as an expert in medical imaging to assess programme standards and serves as a panel in the Institutional Auditors. She was also in the team to prepare guidelines for the Allied Health Sciences Act. Prof Kanaga has been the principal investigator for Science Fund, FRGS and other grants. She has published over 50 articles including chapters in local and international books. She has been invited as a keynote and plenary speaker to various international and national level conferences.



PROF. DR. RAJA LEXSHIMI A/P RAJA GOPAL
DEAN, FACULTY OF NURSING,

Professor Dr Raja Lexshimi Raja Gopal (PhD) is the Dean, Faculty of Nursing, Asia Metropolitan University. She holds a PhD in Medical Education from Universiti Kebangsaan Malaysia, Masters of Science in Nursing (Monash Uni, SA) and Bachelor of Science (Nursing) from the University of Flinders, (Adelaide, SA). A nurse by profession, she started her nursing career with the Ministry of Health and later switched into the education line in Universiti Kebangsaan Malaysia. She did her General nursing in Kubang Kerian and later did her specialization in Ophthalmic Nursing and Midwifery nursing. In UKM, she was attached to the nursing department and spent 23 years working in the education field as a lecturer and an associate professor in Nursing.



DR SAIFUL BAHARI BIN SUFAR
DEAN, FACULTY OF BUSINESS,
- MANAGEMENT AND
INFORMATION TECHNOLOGY

Dr Saiful Bahri Sufar is the Dean, Faculty of Business, Management and IT, Asia Metropolitan University. He holds a Bachelor's degree in Accounting (UKM), Master of Science in Accounting and Finance (University of Stirling) and a PhD (Loughborough University) with thesis on risky issues in the UK stock market. Dr Saiful has over 25 years of academic experience. His main discipline is in Corporate finance with specialization on Asset Pricing. Subjects taught include Corporate Finance, Investment, Portfolio Management, Management Accounting and Managerial Economics both at Undergraduate and Postgraduate Levels. Previous research interest is in the behavior of the Stock Market. Current interest is on inequality of income and issues with Capitalism. Personal interest is Comparative Religion and Spirituality.



ASSOCIATE PROFESSOR DR. TAJMUL RIZWAN TAJUDIN
ACTING DEAN, FACULTY OF
MEDICINE

Associate Professor Dr. Tajmul Rizwan Tajudin is a clinical academician with over 18 years' experience as a medical practitioner and educator. He graduated from International Islamic University (IIUM) with Bachelor of Medicine, Bachelor of Surgery (MBBS) in 2003 and in 2010 attained Membership of Royal College of Physicians of the United Kingdom (MRCP) and subsequently acquired Fellowship in Diabetes Management from Christian Medical College, India. As a clinician, he has worked in Hospital Pakar Sultanah Fatimah, Muar (2003-2008), Hospital Angkatan Tentera 94, Terendak (2011-2015) as a visiting physician from Cyberjaya University College of Medical Sciences (CUCMS), and in University Malaya Medical Center (2015-2017) as a Clinical Fellow in Geriatrics.

FOUNDATION IN BUSINESS STUDIES

(R/010/3/0070) | (MQA/FA1537)

Our programme is designed with courses which are relevant and focused to the field of Business Studies/ Business Administration.

Thereby, the students will be equipped with the knowledge and skills to prepare them for admission into bachelor programmes in Business Studies/ Business Administration.

This programme has attained full accreditation status by Malaysian Qualifications Agency (MQA) in 2013.

DURATION OF STUDY

1 year

MODE OF STUDY

Full Time

INTAKE

January, April & August

ACADEMIC PATHWAY

Leading to

- Degree in Business Administration
- Degree in Accounting
- Other degree programmes in management & arts

ENTRY REQUIREMENTS

SPM

Pass SPM with 5 credits in any subject.

OR

O-Level

Pass GSCE with minimum 5 C's

OR

UEC

Pass with minimum 3 B's

OR

Other equivalent qualifications as recognised by the Malaysian Government



PROGRAMME STRUCTURE

SEMESTER 1

Introduction to Business
Principles of Accounting
Business law
Introduction to Information Technology
English

SEMESTER 2

Introduction to Entrepreneurship
Business Mathematics
Business Communication
Interpersonal Communication Skills
Introduction to Marketing

SEMESTER 3

Basic Business Statistics
Introduction to Economics (Micro and Macro)
Business Ethics
Organisational Behaviour
Critical Thinking

FOUNDATION IN SCIENCE

(R2/010/3/0135) | (A8668)

Foundation in Science (FIS) is a comprehensive pre-university programme which aims in providing students with the scientific knowledge as a preparation in pursuing their academic path in the field of science and technology at higher education level.

Our programme is designed to offer an excellent and worthy pre-university education that will augment the relevant pathway towards achieving industry related careers specifically in the field of Medicine, Physiotherapy, Allied Health Science and Healthcare Management as well as in Business Management and Information Technology.

This programme has attained full accreditation status by Malaysian Qualifications Agency (MQA) in 2009.

DURATION OF STUDY

1 year

MODE OF STUDY

Full Time

INTAKE

January, April & August

ACADEMIC PATHWAY

Degree in Health Science

- CGPA 3.00 and above for MBBS
- CGPA 2.50 and above for
 - Bachelor in Physiotherapy
 - Bachelor in Healthcare Management
 - Bachelor Degree in Allied Science Courses
 - Degree in Health Science

ENTRY REQUIREMENTS

SPM OR EQUIVALENT

- For academic leading to Medicine (after completing FIS); Pass SPM/O-Level with minimum 5 grade B in Biology, Chemistry, Physics, Mathematics (or Additional Mathematics) AND other subject; or equivalent qualifications based on MQA/MMC guidelines.
- For academic leading to other Bachelor Degree (after completing FIS); Pass SPM/O-Level with minimum 5 credits in Mathematics, TWO Science subjects and TWO other subjects; or equivalent qualifications based on MQA guidelines.

*International students may pursue FIS at AMU with equivalent academic qualification.



PROGRAMME STRUCTURE

SEMESTER 1

- English I
- Mathematics I
- Biology I
- Behavioural Sciences: Psychology
- Introduction to Information Technology

SEMESTER 2

- English II
- Biology II
- Physics I
- Chemistry I
- Introduction to Business

SEMESTER 3

- English III
- Physics II
- Chemistry II
- Mathematics II
- Interpersonal Communication Skills

FOUNDATION IN INFORMATION TECHNOLOGY

(N/482/3/0165) | (MQA/FA11228)

The Foundation Programme for IT Studies is a one-year programme is designed to provide students with the necessary foundational knowledge on business and information technology to enable them to undertake a rigorous degree programme in Informational Technology or Computer Sciences.

DURATION OF STUDY

1 year

MODE OF STUDY

Full Time

INTAKE

January, April & August

ACADEMIC PATHWAY

Leading to

- Degree in Information Technology
- Degree in Computer Science
- Other degree programmes in related field.

ENTRY REQUIREMENTS

Pass SPM with 5 credits in any subject.

- i. To further studies in the field of computing (Information Technology and Information System)
 - Obtain SPM with atleast credits in 5 subjects including Mathematics or its equivalent qualification
OR
 - Pass 0-Level with atleast Gred C in 5 subjects including Mathematics or its equivalent qualification
OR
 - Pass UEC with atleast Gred B in 3 subjects including Mathematic or its equivalent qualification
- ii. To further studies in the field of computing (Computer Science and Software Engineering)
 - Obtain SPM with atleast credits in 5 subjects including Additional Mathematics or its equivalent qualification
OR
 - Pass 0-Level with at least Gred C in 5 subjects including Additional Mathematic or its equivalent qualification
OR
 - Pass UEC with atleast Gred B in 3 subjects including Additional Mathematic or its equivalent qualification



PROGRAMME STRUCTURE

SEMESTER 1

Fundamental of Mathematics
Introduction to Information Technology
English
Introduction to Networking
Introduction to Social Media
Interpersonal Communication Skills

SEMESTER 2

Fundamental of Database
Fundamental of Programming
Fundamental of Operating System
Fundamental of Statistics
Critical Thinking

SEMESTER 3

Introduction to Multimedia
Introduction to IT Security
Fundamental of Web Page Design

DIPLOMA IN BUSINESS ADMINISTRATION

(R/345/4/0217) | (MQA/FA1895)

This 2.5-year intensive programme seeks to provide students with the practical skills and knowledge to perform important administrative functions within a business or an organization. The programme instills leadership qualities to enable our graduates to not just be a competent employee but to showcase self-initiative and leadership traits that would give them the edge.

DURATION OF STUDY

2.5 years

MODE OF STUDY

Full Time

INTAKE

January, April & August

CAREER PROSPECT

- Sales executive
- Marketing executive
- Finance executive
- Administrative executive
- Customer Service executive
- Programme Leader
- Human Resource Executive

ENTRY REQUIREMENTS

- A pass in SPM with at least credit in any 3 subjects, or any equivalent qualification;
OR
- A pass in Sijil Tinggi Persekolahan Malaysia (STPM), with a minimum of Grade C (GP 2.0) in any subject, or any equivalent qualification;
OR
- A pass in Sijil Tinggi Agama Malaysia (STAM) with a minimum grade of Maqbul;
OR
- A pass in SKM Level 3 in a related field, and a pass in SPM with a minimum of 1 credit in any subject;
OR
- Any qualifications equivalent to Certificate (Level 3, Malaysian Qualifications Framework, MQF).

English proficiency for foreign students should obtain IELTS (5.0) paper-based or equivalent



PROGRAMME STRUCTURE

YEAR 1 - SEMESTER 1

- Introduction to Business
- Fundamentals of Marketing
- Fundamentals of Accounting
- Communicative English
- Fundamentals of Management
- Bahasa Kebangsaan A

YEAR 1 - SEMESTER 2

- Fundamentals of Human Resource Management
- Business Communication
- Business Mathematics
- Fundamentals of financial Management
- Malaysian Studies / Communication in Malay 1

YEAR 1 - SEMESTER 3

- Communication & Presentation Skills
- Business Ethics
- Critical & Creative Thinking Skills
- Youth Development

YEAR 2 - SEMESTER 1

- Organizational Behaviour
- AMUnited
- Business Statistics
- Entrepreneurship
- Innovation Management
- Introduction to Microeconomics

YEAR 2 - SEMESTER 2

- Business Law
- Financial Accounting
- Introduction to Macroeconomics
- Principles & Practice of Selling
- Psychology at workplace

YEAR 2 - SEMESTER 3

- Fundamentals of Operations Management
- Risk Management
- International Business

YEAR 3 - SEMESTER 1

- Practical (Internship)

DIPLOMA IN INFORMATION TECHNOLOGY

(N/482/4/0181) | (MQA/FA10561)

This programme will allow students to become skilled, innovative and work-ready professionals in the information technology industry. It provides hands-on exposure and valuable training with new technologies and solutions.

DURATION OF STUDY

2 years

MODE OF STUDY

Full Time

INTAKE

January, April & August

CAREER PROSPECT

- IT Support Executive
- System analyst
- Software developer
- Web designer

ENTRY REQUIREMENTS

- A pass in SPM with at least credit in any 3 subjects inclusive of Mathematics or any equivalent qualification;
OR
- A pass in Sijil Tinggi Persekolahan Malaysia (STPM), with a minimum of Grade C (GP 2.0) in any subject or any equivalent qualification and a credit in Mathematics at SPM level or its equivalent;
OR
- A pass in Sijil Tinggi Agama Malaysia (STAM) with a minimum grade of Maqbul (pass) and a credit in Mathematics at SPM level or its equivalent;
OR
- A pass in SKM Level 3, and a credit in Mathematics at SPM level or its equivalent;
OR
- A pass in any qualification equivalent to Certificate (Level 3, MQF) and a credit in Mathematics at SPM level or its equivalent.

Candidates without a credit in mathematics at SPM level or its equivalent may be admitted if the Certificate programme contains subjects in mathematics that are equivalent to mathematics at SPM level.

Candidate with a credit in computing related subject at SPM level or its equivalent may be given preferential consideration.



PROGRAMME STRUCTURE

YEAR 1

- Principles of Information Technology
- Discrete Mathematics
- Principles of Networking
- Multimedia Technology
- Fundamentals of System Analysis and Design
- Communicative English
- Bahasa Kebangsaan A
- English for Information Technology
- Programming Concepts and Design
- Database System
- Operating System
- Malaysian Studies/ Communication in Malay 2
- Fundamentals of Management
- Entrepreneurship
- Critical & Creative Thinking Skills
- Youth Development
- Fundamentals of Wireless Networking

YEAR 2

- Internet Programming
- Web Page Design
- Object-Oriented Programming
- Information Systems Security
- AMUnited 1
- Psychology At The Workplace
- Data Structure
- Data Communication
- Computer Architecture
- Computer Human Interaction
- Internet of Things
- Practical (Internship)

DIPLOMA IN ACCOUNTING

(N/344/4/0532) | (MQA/FA10779)

While focusing more on practical knowledge, the diploma programme will equip students with the key competencies to perform accounting operations as part of any company. They will be able to gain employment in any commercial organisations, the public sector, the financial industry or consulting and accounting firms.

DURATION OF STUDY

2 years (Full Time)
3 years (Part Time)

MODE OF STUDY

Full Time and Part Time

INTAKE

January, April & August

CAREER PROSPECT

- Account Executive
- Finance Executive
- Banking Executive
- Junior Auditor

ENTRY REQUIREMENTS

1. A Pass in SPM or its equivalent with a minimum of 3 credits including Mathematics, and a pass in English;
OR
2. A Pass in Unified Examination Certificate (UEC) with minimum Gred Bin 3 subjects including Mathematics and English
OR
3. A pass in O-level with minimum Gred C in 3 subjects including Mathematics and English
OR
4. Pass SKM Level 3 in related field and a pass in SPM with a minimum of 1 credit in any subject including Mathematics and a pass in English;
OR
5. A Pass in certificate from Community College level3 MQF or its equivalent and;
 - A pass in SPM* with minimum credit in 1 subject including Mathematics, and a pass in English and
 - Undergo enhancement programme (if necessary)**OR**
6. A pass in certificate level 3 MQF in a related field with a minimum CGPA 2.00
OR
7. A pass in Sijil Tinggi Persekolahan Malaysia (STPM) or its equivalent, with a minimum of Grade C (GP 2.0) in any subject, and credits in Mathematics and a pass in English at SPM level;
OR
8. A pass in Sijil Tinggi Agama Malaysia (STAM) with a minimum grade of Maqbul (pass) and credits in Mathematics and a pass in English at SPM level;
OR
9. Other qualification or its equivalent

International students are required to achieve a minimum score of IELTS 5.5 or TOEFL 550 or its equivalent



PROGRAMME STRUCTURE

YEAR 1

- Introduction to Business
- Business Statistics
- Fundamentals of Accounting
- Business Mathematics
- Fundamentals of Management
- Communicative English
- Bahasa Kebangsaan A (without SPM credit)
- Business Ethics
- Financial Accounting
- Introduction to Information Technology
- Introduction to Microeconomics
- Malaysian Studies/ Bahasa Melayu Komunikasi
- Communication & Presentation Skills
- Business Law
- Fundamentals of Financial Management
- Critical & Creative Thinking Skills
- Youth Development

YEAR 2

- Cost Accounting
- Financial Reporting 1
- Entrepreneurship
- Malaysian Taxation 1
- Introduction to Macroeconomics
- AMUnited 1
- Computerised Accounting
- Management Accounting
- Audit and Assurance
- Financial Reporting 2
- Malaysian Taxation 2
- Psychology at Workplace
- Industrial Training (Internship)
- Accounting Collaborative Project

DIPLOMA IN NURSING

(R2/723/4/0105) | (MQA/FA4118)

This 3-year Diploma programme prepares you to be a qualified nurse, recognized in Malaysia and neighbouring countries such as Singapore and Brunei as well as globally. Graduates from this programme will be officially registered with the Malaysian Nursing Board upon passing the Malaysian Nursing Board exam at the end of their 3 year course. Jobs opportunities are available upon graduation with local government and private hospitals in Malaysia.

DURATION OF STUDY

3 years

MODE OF STUDY

Full Time

INTAKE

January, April & August

CAREER PROSPECT

- Clinical Instructor
- Nurse Midwife
- Nurse Educator
- Nurse Entrepreneur

ENTRY REQUIREMENTS

1. Pass Sijil Pelajaran Malaysia (SPM) or *Equivalent with five (5) credits:

Mandatory credit in:

- Bahasa Melayu.
- Mathematics (Elementary or Additional or Modern).

Either one (1) of the credit below:

- General Science/Biology/Chemistry/Physics/ Applied Science

AND

- Credit in two (2) other subjects.

AND

- Pass in English .

OR

- Pass Sijil Pelajaran Malaysia (SPM).
- Possess Assistant Nurse Certificate/Community Nurse Certificate.
- Registered with the MNB
- Possess current Annual Practising Certificate (APC) for nurses from MNB.
- Minimum three (3) years clinical working experience.

***Equivalent**—refers to the overseas academic qualification obtained that is equivalent to SPM as approved by MQA.



PROGRAMME STRUCTURE

YEAR 1

- Anatomy, Physiology and Biochemistry I
- Psychology & Sociology
- Fundamentals of Nursing
- Communicative English/Bahasa Kebangsaan A
- Malaysian Studies 2/Communication in Malay I
- Clinical Practice I
- Anatomy, Physiology and Biochemistry II
- Pharmacology
- Microbiology, Parasitology & Immunology
- Communication, Interpersonal Relationship, Professionalism & Counselling
- Introduction to Medical-Surgical Nursing
- Clinical Practice II
- Clinical Practice III

YEAR 2

- Cardiovascular & Respiratory Nursing
- Gastrointestinal Nursing
- Hemopoietic and Oncology Nursing
- Integumentary and Autoimmune and Communicable Disease Nursing
- Clinical Practice IV
- nervous System and Endocrine Nursing
- Musculoskeletal and Urogenital Nursing
- Ophthalmology and Otorhinolaryngology Nursing
- Clinical Practice V
- AMUnited I
- Clinical Practice VI

YEAR 3

- Obstetric & Gynecology and Paediatric Nursing
- Mental Health Nursing
- Ethics and Law
- Clinical Practice VII
- Creative and Critical Thinking Skills
- Youth Development
- Community Health Nursing
- Management
- Emergency and Intensive Care Nursing
- Research Methodology
- Clinical Practice VII
- Clinical Practice IX

DIPLOMA IN HEALTHCARE MANAGEMENT

(R/723/4/0147) | (A6719)

Diploma in Healthcare Management is a 3-year programme which provides students with the knowledge in healthcare organizational values, strategies and philosophies, paving the way for graduates to obtain task-performing skills to be applied in a healthcare setting upon graduation.

DURATION OF STUDY

3 years (9 semesters)

MODE OF STUDY

Full Time

INTAKE

January, April & August

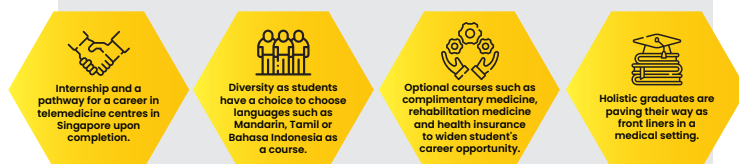
CAREER PROSPECT

- Hospital Administrative Assistant
- Health Administrative Assistant
- Claims Processing Assistant
- Dental Admin Assistant
- Clinic Administrative Assistant
- Hospital Facilities Assistant
- Hospital Support Service Assistant

ENTRY REQUIREMENTS

- i. SPM or equivalent with PASS in Bahasa Malaysia and English and 3 credits in the following subjects:
 - Mathematics or ONE science subject (Biology/Physics/Chemistry/General science); and
 - Any other TWO subjects (including Bahasa Malaysia and/or English if obtained credit)
- OR**
- ii. GCE/O level or equivalent with PASS in Bahasa Malaysia or English and 3 credits (Grade C) in the following subjects:
 - Mathematics or ONE science subject (Biology/Physics/Chemistry/General science); and
 - Any other TWO subjects (including Bahasa Malaysia and English if obtained credit)
- OR**
- iii. Certificate in Health Sciences or related field with a minimum CGPA of 2.50

Why study in AMU Diploma in Healthcare ?



PROGRAMME STRUCTURE

YEAR 1

- Introduction to Healthcare
- Behavioral Science
- Human Anatomy & Physiology
- Healthcare Terminology
- Communicative English
- Medical Ethics
- Health and Social Care Services
- Introduction to Pharmacology
- Communication and Supportive Skills
- Malaysian Studies
- Youth Development
- Critical And Creative Thinking Skills
- Current Issues in Health

YEAR 2

- Health Education and Promotion
- Epidemiology
- Medical Office Management
- Lifespan Health Disorders
- AMUnited 1
- Healthcare Accounting
- Human Resource for Healthcare
- Health Informatics
- Health, Safety and Risk Management
- National Health Policy
- Introduction to Organisational Behaviour
- Quality Management
- Emergency & Disaster Management

YEAR 3

- Introduction to Mandarin/Complimentary Medicine
- Introduction to Tamil/Health Insurance
- Introduction to Bahasa Indonesia/Rehabilitation Medicine
- Management of Clinical Service Departments
- Principles of Health Finance And Economy
- Professional Leadership Development
- Sanitation and Hospital Waste Disposal
- Industrial Training I (Management of Clinical Services)
- Industrial Training II (Supportive Services)
- Industrial Training III

BACHELOR OF BUSINESS ADMINISTRATION (HONS)

(R/340/6/0207) | (MQA/FA1737)

Developed with an aim of creating successful managers, entrepreneurs and business leaders, this 3-year programme brings together the key elements needed for one to succeed in the business world. It's rigorous curriculum will ensure students gain a deeper understanding of theories in action through business case studies while being given the opportunity to practice in real-life projects.

DURATION OF STUDY

3 years (9 semesters)

MODE OF STUDY

Full Time

INTAKE

January, April & August

CAREER PROSPECT

- Sales manager
- Marketing manager
- Financial analyst
- Business consultant

ENTRY REQUIREMENTS

- i. A pass in STPM with a minimum Grade C (GP 2.0) in any 2 subjects, and a pass in Mathematics and English at SPM level, or any equivalent qualification;
OR
- ii. A pass in STAM with a minimum grade of *Jayyid*, and a pass in Mathematics and English at SPM level;
OR
- iii. Any qualifications equivalent to Diploma or Advanced Diploma (Level 4 or 5, MQF);
OR
- iv. Matriculation/Foundation qualification with a minimum CGPA of 2.00 out of 4.00, or any equivalent qualification;
OR
- v. UEC with at least Grade B in 5 subjects including Mathematics & English.

Note: The requirement to pass Mathematics and English subjects at SPM level for candidate in category (i) and (ii) can be waived should the qualifications contain Mathematics and English subjects with equivalent/higher achievement.

International students are required to achieve a **minimum** score of 5.5 for IELTS OR its equivalent.



PROGRAMME STRUCTURE

YEAR 1

- Malaysian Business Environment
- Accounting for Decision Makers
- Organisation Management
- English for Academic Enrichment
- Bahasa Kebangsaan A
- Microeconomics for Business Decisions
- Principles of Marketing
- Accounting Practice
- Public Speaking and Presentation Skills
- Macroeconomics in the Global Economy
- Hubungan Etnik
- Communication in Malay 3
- Human Resource Management
- Tamadun Islam & Tamadun Asia
- Malaysian Studies 3
- Foundations of Law
- Management Information System
- Malaysian Government and Public Policy

YEAR 2

- Principles of Finance
- Business Mathematics
- Business Communication Skills
- Psychology at the Workplace
- Organisational Behaviour
- Leadership & Development
- Managerial Accounting
- Selling & Sales Management
- AMUnited 2
- Environmental Management for Business
- Operations Management
- Business Ethics & Corporate Social Responsibility
- Financial Management

YEAR 3

- Business Research Methods
- Business Statistics
- Project Paper
- Strategic Management
- Entrepreneurship
- Industrial Attachment

MAJOR IN MARKETING

- Consumer and Buying Behaviour
- Marketing Management
- International Marketing
- Services Marketing
- Strategic Marketing Planning
- Integrated Marketing Communication
- Project Paper
- Distribution Management
- E-marketing

MAJOR IN HUMAN RESOURCE

- Organizational Development & Change
- Quality Management
- Performance Management
- Employee Recruitment and Selection
- Compensation Management
- Training and Development Management
- Project Paper
- Labour and Industrial Relations Law
- Occupational Safety and Health Policies, Issues & OSH Challenges at Workplace

BACHELOR OF COMPUTER SCIENCE (HONS)

(N/481/6/0819 | (MQA/PA11417)

The Bachelor in Computer Science (Hons) programme aims to equip graduates with analytical, logical and critical thinking skills as well as scientific and engineering approach in developing and implementing robust and useful computing solutions.

This industry relevant programme is designed to meet global needs in the computing industry.

DURATION OF STUDY

3 years

MODE OF STUDY

Full Time

INTAKE

January, April & August

CAREER PROSPECT

- Network Manager
- System Analyst
- Computer Programmer & Engineer
- Software developer
- Cyber Security Manager

ENTRY REQUIREMENTS

Matriculation or Foundation

*A pass in Matriculation or Foundation studies or its equivalent with minimum CGPA of 2.0 and credit with the following 2 subjects at SPM level or its equivalent:

- a) **Additional Mathematics; OR**
- b) **Mathematics and one of Science, Technology or Engineering subjects**

Note: Candidates with b) must take Mathematics reinforcement subject with topics relevant to Computer Science and Software Engineering at the beginning of the study; **OR**

STPM

*A pass in Sijil Tinggi Persekolahan Malaysia (STPM) in science stream or equivalent with a minimum Grade C (CGPA 2.00) in the following 2 subjects;

- a) **Mathematics; AND**
- b) **Science or ICT subjects**

Diploma

1. A Diploma in Computer Science OR Software Engineering OR Information Technology OR Information Systems or equivalent with a minimum CGPA of 2.50.
2. Any Diploma in Science and Technology with a minimum CGPA of 2.50.

Note: Candidates with CGPA below 2.50 but above 2.00 maybe admitted subject to rigorous internal assessment process.

International students must have proof of good proficiency in verbal and written English. International English Language Testing System (IELTS) score of 6.0 or its equivalent.

PROGRAMME STRUCTURE

YEAR 1

- Principles of information Technology
- Discrete Mathematics
- Programming Concepts and Design
- Operating System
- Data Communication
- English For Academic Enrichment
- Programming Language Concepts & Paradigms
- Information Systems Security
- Object-Oriented Programming
- Database Management
- Tamadun Islam Dan Tamadun Asia / Malaysian Studies 3
- Hubungan Etnik / Bahasa Melayu Komunikasi 2 MPU
- Bahasa Kebangsaan A
- Knowledge Management and Engineering
- Wireless Network Planning and Design
- Malaysian Government and Public Policy

YEAR 2

- Computer Architecture
- Software Quality
- Concurrent and Real-time System
- Mobile Application Development
- Search Engines Technologies
- Public Speaking and Presentation Skills
- Database System Concepts
- Leadership and Professional Development
- Social and Professional Responsibilities
- Multimedia Technology
- Emerging Technologies
- AMUnited 2
- Software Requirements Analysis & Modelling
- ELECTIVE
- ELECTIVE

YEAR 3

- Artificial Intelligence
- System Development Tools and Techniques
- Data Structure and Algorithms
- Parallel and Distributed Computing
- Professional & Technopreneurship Development (Research method)
- Internship
- Integrated Software Development
- Computer Science Collaborative Project

ELECTIVE

Students to select any specialisation group by completing the 2 electives in the same group with 1 additional module

Network and Mobile Computing

- Human Computer Interaction
- Wireless Network & Mobile Computing

Network Security

- Systems Security & Protection
- Information Security & Assurance

Cloud Computing

- Internet Protocols Architecture & Routing
- Web Engineering & Technologies



BACHELOR OF ACCOUNTANCY (HONOURS)

(N/344/6/0530) | (MQA/PA11416)

The Bachelor of Accounting allows students to develop skills that are fundamental to evaluating, analysing and communicating the financial position of any organization. The programme prepares students in the core areas of financial accounting, management accounting, finance, tax, auditing and economics.

DURATION OF STUDY

4 years

MODE OF STUDY

Full Time

INTAKE

January, April & August

CAREER PROSPECT

- Accountant
- Finance Manager
- Financial Analyst
- Financial Advisor
- Auditor
- Taxation Manager
- Banking Manager/Executive

ENTRY REQUIREMENTS

Malaysian University English Test (MUET) Band 2; **AND**

- 1). A pass in STPM or its equivalent, with a minimum Grade C+ (GP 2.33) in any two subjects, and credits in Mathematics and a pass in English at SPM level;
OR
- 2). A pass in Sijil Tinggi Agama Malaysia (STAM) with a minimum grade of Jaiyyid, (good) and credits in Mathematics;
OR
- 3). A diploma in accounting or related field, or its equivalent with a minimum CGPA of 2.50, and credits in Mathematics;
OR
- 4). Matriculation/Foundation qualification or its equivalent with a minimum CGPA of 2.50, and credits in Mathematics.

The requirement to pass mathematics subject at SPM level for candidate in category (1), (2) & (4) can be waived should the qualification contains mathematics subject with equivalent/higher achievement.

For International Students, Test of English as a Foreign Language (TOEFL) score of 550 OR International English Language Testing System (IELTS) score of 5.50 OR its equivalent.

PROGRAMME STRUCTURE

YEAR 1

- Principles Of Accounting I
- Business In Context
- Principles Of Management
- English For Academic Enrichment
- Principles Of Accounting II
- Principles Of Marketing
- Microeconomics
- Tamadun Islam And Tamadun Asia / Malaysian Studies 3
- Hubungan Ethnik / Bahasa Melayu Komunikasi 2
- Commercial Law
- Principles Of Finance
- Malaysian Government And Public Policy

YEAR 2

- Financial Disclosure I
- Macroeconomics
- Business Statistics
- Leadership and Professional Development
- Company And Partnership Law
- Costing
- Financial Disclosure II
- Financial Management
- Management Accounting
- Taxation I
- Public Speaking & Presentation Skill
- AMUnited 2

YEAR 3

- Corporate Financial Reporting I
- Taxation II
- Accounting Information Systems
- Principles of Auditing
- Ethics, Governance & Professional Accountability
- Corporate Finance
- Corporate Financial Reporting II
- Management Information Systems
- Industrial Training

YEAR 4

- Public Sector Accounting
- Strategic Management
- Advanced Auditing
- Strategic Management Accounting
- Accounting Theory and Practice
- Elective 1
- Elective 2
- Elective 3
- Elective 4



BACHELOR OF NURSING (HONS)

(N/723/6/0190) | (MQA/PA10777)

This programme aims to produce professional nursing graduates who possess critical thinking and social skills and are passionate towards providing services to meet the 21st century health needs of individuals, families, communities and the population as a whole.

DURATION OF STUDY

4 years

MODE OF STUDY

Full Time

INTAKE

May & September

CAREER PROSPECT

- Clinical Instructor
- Advanced Practice Nurses
- Nurse Researchers
- Disaster Nurse
- Nurse Risk Managers
- Nurse Informatics

ENTRY REQUIREMENTS

Either one (1) of the following below:

- Pass Sijil Tinggi Persekolahan Malaysia (STPM) or *equivalent with minimum CGPA 2.5; **OR**
 - Pass 'A' Level minimum Grade C in three (3) other subjects; **OR**
 - Pass Matriculation/Foundation with minimum CGPA 2.5; **OR**
 - Pass any Diploma with minimum **CGPA 2.5 (No credit transfer)** equivalent MQF Level 4. **OR**
 - Pass Diploma in Nursing from a recognized institution by MNB with minimum two (2) year & clinical working experience. **(Credit transfer allowed).**
- AND**

All candidate who possess STPM, 'A' Level, Matriculation/Foundation and pass any Diploma except Diploma in Nursing MUST possess: Either one (1) of the credit below:

- Science/Biology/Chemistry/Physics/Applied science at SPM or its equivalent; AND
- Credit in Maths (Elementary OR Modern OR Additional) at SPM level or its equivalent;
- MUET with minimum Band 3/IELTS (5.5)/TOEFL (515/215/80)/Credit in English SPM



PROGRAMME STRUCTURE

YEAR 1

- Anatomy, Physiology and Biochemistry I
- Microbiology, Parasitology & Immunology.
- Fundamental of Nursing I
- Communication in Nursing
- Clinical Practice I
- English for Academic Enrichment
- Anatomy, Physiology and Biochemistry II
- Pharmacology in Nursing
- Principles of Nutrition
- Fundamental of Nursing II
- Clinical Practice II
- Ethics Relations (Hubungan Ethnik)
- Tamadun Islam and Tamadun Asia

YEAR 2

- Psychology & Sociology
- Introduction to Medical-Surgical Nursing
- Cardiovascular & Respiratory Nursing
- Gastrointestinal Nursing
- Clinical Practice III
- M'sia Govt & Public policy
- Autoimmune Disorders & Neurological Nsg
- Health Promotion & Health Education
- Clinical Practice IV
- Leadership & Professional Development.

YEAR 3

- Personal & Professional Dev & Counselling
- Obstetric & Gynaecology Nursing
- Paediatric Nursing
- Special senses (Eye, ENT, Skin & Communicable Dis
- Clinical Practice V
- AMUnited I
- Research Methodology and Biostatistics
- Biostatistics & Epidemiology
- Mental Health Nursing
- Community Health Nursing
- Clinical Practice VI

YEAR 4

- Research Project I
- Ethics & Medico Legal in Nursing
- Critical Care & Emergency Nursing
- Gerontology Nursing
- Clinical practice VII
- Research Project II
- Management & Administrative
- Nursing Practice
- Elective I (Oncology/Complementary & Alternative Medicine Nursing
- Clinical Practice VIII (Management Practicum)

BACHELOR OF PHYSIOTHERAPY (HONS)

(R2/726/6/0044) | (A9744)

This programme aims to produce a Physiotherapist with an in-depth knowledge and competency in the assessment and treatment with the incorporation of quality patient care and evidence-based practice. The individual should possess clinical reasoning and able to be in a team player for consultation and health promotion in a hospital settings or health institutions.

DURATION OF STUDY

4 years

MODE OF STUDY

Full time (flexible study plan)

INTAKE

June & September

CAREER PROSPECT

- Physiotherapist
- Clinical Therapist
- Academician
- Clinical Instructor
- Physiotherapy Entrepreneur
- Other Centres : Sports, Fitness, Rehabilitation, Community Health Care & Primary health care.

ENTRY REQUIREMENTS

- i). Obtained MUET Band 3 or IEL TS (5.5)/TOEFL (550) **AND**
 - a). PASS Matriculation/Pre-University/STPM programme or equivalent qualification with minimum **GPA 2.33** in TWO of the following subjects:
 - Biology
 - Physics/Mathematics
 - Chemistry
 - OR**
 - b). A-Level programme or equivalent qualification with minimum **Grade D** in TWO of the following subjects:
 - Biology
 - Physics/Mathematics
 - Chemistry
 - OR**
 - c). Recognised Diploma with minimum CGPA of 2.75 in related field;
 - OR**
 - d). Recognised Diploma with CGPA less than 2.75 in related field and a minimum of 3 years (36 months) working experience in the related field.

English proficiency for foreign student

Candidate should obtain IELTS (5.5)/TOEFL (550) paper-based or equivalent.

PROGRAMME STRUCTURE

YEAR 1

- Anatomy I
- Physiology I
- Physics for Physiotherapists
- Introduction and Professional Development in Physiotherapy
- English for Academic Enrichment
- Leadership and Development
- Anatomy II
- Physiology II
- Biomechanics and Kinesiology
- Behavioural Science
- Tamadun Islam & Tamadun Asia/ Malaysian Studies 3
- Hubungan Etnik/ Melayu Komunikasi 2

YEAR 2

- Neurosciences
- Exercise Physiology
- Pathology
- Movement Therapy I
- Physiotherapy in Medicine and Surgery
- Malaysian Government and Public Policy
- Introduction to Pharmacology
- Electro Physical Agent I
- Physiotherapy Practice in Musculoskeletal I
- Movement Therapy II
- Physiotherapy in Women's Health
- AMUnited II
- Clinical Placement I

YEAR 3

- Biostatistics
- Research Methodology
- Physiotherapy Practice in Pulmonary
- Physiotherapy Practice in Musculoskeletal II
- Electro Physical Agent II
- Research Project I
- Physiotherapy Practice in Neurological I
- Physiotherapy Practice in Cardiovascular
- Clinical Placement II
- Clinical Placement III

YEAR 4

- Research Project II
- Physiotherapy in Geriatrics
- Sports Physiotherapists
- Physiotherapy Practice in Neurological II
- Physiotherapy in Pediatrics
- Clinical Placement IV
- Clinical Placement V
- Clinical Placement VI
- Clinical Placement VII
- Clinical Placement VIII

ELECTIVE (ANY ONE)

- Occupational Ergonomics
- Hand Rehabilitation
- Rehabilitation Medicine



BACHELOR OF BIOMEDICAL SCIENCE (HONS)

(R2/720/6/0122) | (A10078)

In a current world new strains of diseases emerge, causing a negative impact on the wellbeing of our communities, biomedical science will provide us an important ways to prevent and treat the wide range of diseases that affect our communities. This programme aims to produce graduates who have a good foundation and experience in the field of Biomedical Science allowing them to do scientific work and research in the field of human health and disease. In addition to proficiency in medical laboratory procedures and operation techniques, a Biomedical Science graduate can also manage diagnostic, business and industrial laboratories.

DURATION OF STUDY

4 years

MODE OF STUDY

Full Time

INTAKE

May and September

CAREER PROSPECT

- Biomedical / Healthcare Scientist
- Academician
- Research scientist (medical)
- Health Policy Professional
- Marketing of medical equipment
- Medical science liaison
- Application specialist
- Medical underwriter & claim officer
- Quality Control Officer
- Bio-entrepreneur

ENTRY REQUIREMENTS

- i). Obtained MUET Band 3 or IEL TS (5.5)/TOEFL (550) **AND**
 - a). PASS Matriculation/Pre-University/STPM programme or equivalent qualification with minimum **GPA 2.33** in TWO of the following subjects:
 - Biology
 - Physics/Mathematics
 - Chemistry
 - OR**
 - b). A-Level programme or equivalent qualification with minimum **Grade D** in TWO of the following subjects:
 - Biology
 - Physics/Mathematics
 - Chemistry
 - OR**
 - c). Recognised Diploma with minimum CGPA of 2.75 in related field;
 - OR**
 - d). Recognised Diploma with CGPA less than 2.75 in related field and a minimum of 3 years (36 months) working experience in the related field

English proficiency for foreign student

Candidate should obtain IELTS (5.5)/TOEFL (550) paper-based or equivalent.

PROGRAMME STRUCTURE

YEAR 1

- Laboratory Techniques and Instrumentation
- Laboratory and Solid Waste Management
- Basic Hematology
- Anatomy and Physiology I
- Organic Chemistry
- Basic Microbiology
- English for Academic Enrichment
- Histocytopathology
- Occupational Health and Safety
- Anatomy and Physiology II
- Basic Pathology
- Biochemistry and Basic Genetic
- Hubungan Etnik
- Tamadun Islam & Tamadun Asia (TITAS)

YEAR 2

- Ethics in Science
- Clinical Microbiology
- Immunology and Serology
- Blood Banking and Transfusion Science
- Health Informatics*
- Malaysian Government and Public policy
- Molecular Biology
- Medical Biochemistry
- Medical Parasitology & Entomology
- Epidemiology
- Biostatistics
- Leadership and development

YEAR 3

- Clinical Pathology
- Research Methodology
- Critical Thinking
- Pharmacology & Toxicology
- AMUnited 2
- Complementary medicine/ Medical tourism*
- Biomedical Diagnostic I
- Research Project I
- Healthcare Disaster Management
- Psychology and Behavioral Science
- Pathophysiology
- Career in Health Sciences /Strategic Planning and Marketing in Healthcare Services

YEAR 4

- Biomedical Diagnostic II
- Research Project II
- Health insurance /Entrepreneur marketing*
- Industrial Training I
- Industrial Training II
- Industrial Training III

Why Study Biomedical Science at AMU?



BACHELOR OF MEDICINE AND BACHELOR OF SURGERY (MBBS)

(R2/721/6/0072) | (MQA/A11393)

Bachelor of Medicine, Bachelor of Surgery (MBBS) programme of the Asia Metropolitan University (AMU) is a 5-year programme approved by the Malaysian Qualification Agency (MQA), Malaysian Medical Council (MMC) and the Ministry of Higher Education (MOHE). It has obtained international recognition by the World Directory of Medical School (WDMS), World Health Organization (WHO), Medical Council of India (MCI), Maldives Medical and Dental Council (MMDC) and Bangladesh Medical and Dental Council (BMDC).

The Bachelor of Medicine, Bachelor of Surgery (MBBS) programme provides equitable access to quality medical education to produce doctors who are competent, compassionate, professional, ethical and also has a leadership quality.

DURATION OF STUDY

5 years – 7 years

MODE OF STUDY

Full Time

INTAKE

September

CAREER PROSPECT

- Medical Doctor
- Medical Advisor
- Insurance Claims Assessor
- Lecturer & Trainer

PROGRAMME STRUCTURE

YEAR 1

- Gen. Anatomy
- Gen. Biochemistry
- Gen. Physiology
- Gen. Pathology
- Medical Microbiology
- English for Academic Enrichment
- Hubungan Etnik
- Medical Immunology
- Gen. Pharmacology
- Behavioural Sciences & Communication
- Endocrine System
- Nervous System
- Tamadun Islam & Tamadun Asia (TITAS)

YEAR 2

- Musculoskeletal System
- Cardiovascular System
- Respiratory System
- G.I.T
- Malaysian Government and Public Policy
- Reproductive System
- Urinary System
- Public Health
- Research & EBM
- AMUnited 2
- Leadership and Professional Development
- Ethics and Professionalism

YEAR 3

- Foundation in Clinical Clerkship
- Community Medicine
- Internal Medicine 1
- Surgery 1
- Obstetrics & Gynaecology 1
- Paediatric 1
- Medical Ethics and Professionalism

YEAR 4

- Clinical Elective
- Orthopaedic 1
- Psychiatry 1
- Family Medicine
- ENT
- Ophthalmology
- Anaesthesiology
- Emergency Medicine
- Radiology
- Forensic and Medical Jurisprudence
- Medical Ethics and Professionalism

YEAR 5

- Internal Medicine 2
- Surgery 2
- Obstetrics & Gynaecology 2
- Paediatric 2
- Orthopaedic 2
- Psychiatry 2
- Medical Ethics and Professionalism



ENTRY REQUIREMENTS

a) School Certificate level or its equivalent:

- **Sijil Pelajaran Malaysia (SPM); or General Certificate of Education Ordinary ("O") levels**
Minimum of 5Bs each in
 - Biology; and
 - Chemistry; and
 - Physics; and
 - Mathematics or Additional Mathematics; and
 - Another subject
- **Unified Examination Certificate (UEC)**
Obtain B4 in 3 of the following subjects:
 - Biology; and
 - Chemistry; and
 - Physics / Mathematics / Additional Mathematics

AND the following

b) Higher School Certificate level or its equivalent:

- **Sijil Tinggi Pelajaran Malaysia (STPM)**
Grades BBB, ABC or AAC in 3 subjects i.e. Biology; and Chemistry and Physics or Mathematics
- **General Certificate of Education Advanced ("A") Levels**
Grades BBB, ABC or AAC in 3 subjects i.e. Biology; and Chemistry and Physics or Mathematics
- **Matriculation or Foundation in Science or Pre-Medical course**
CGPA 3.0 (out of 4.0) in 3 subject i.e. Biology; and Chemistry and Physics or Mathematics and provided the course is not less than 1 year in the same accredited institution and the minimum entry qualification is 5 Bs each in Biology; and Chemistry; and Physics; and Mathematics (or Additional Mathematics); and another subject at school certificate level or its Equivalent
- **Unified Examination Certificate (UEC)**
B4 each in 5 subjects i.e. Biology, Chemistry, Physics, Mathematics and Additional Mathematics
- **Monash University Foundation, Pre-University Program (MUFY) or University of New South Wales (UNSW) Foundation or Western Australia Curriculum Council or HSC Sydney Australia or Trinity College Foundation Studies or Australia Universities Foundation Programmes or South Australian Matriculation (SAM) or Victorian Certificate of Education Australia Year 12 or Australian Matriculation (AUSMAT)**
 - Aggregate or average of 80% or the equivalent of B in 3 subjects i.e. Biology; and Chemistry; and Physics or Mathematics

OR

- 80% ATAR provided the subjects include Biology, Chemistry and Physics or Mathematics

- **National Certificate of Educational Achievement (NCEA) Level 3 or New Zealand Bursary**
Average of 80% in 3 subjects i.e. Biology and Chemistry and Physics or Mathematics
- **Canadian Pre-U (CPU) or Canadian International Matriculation Programme (CIMP I Canadian Grade 12/13 or Ontario Secondary School Diploma Grade 12**
Average of 80% in 3 subjects i.e. Biology and Chemistry and Physics or Mathematics
- **Indian Pre-university**
Average of 70% in 3 subjects i.e. Biology and Chemistry and Physics or Mathematics
- **International Baccalaureate (IB)**
30 points with minimum of 2 science subjects or Mathematics at Higher Level (HL) and 1 science subject at Standard Level and attained a minimum score of 4 each in Biology; and Chemistry; and Physics or Mathematics

OR

c) Diploma level

- **Diploma in Health Sciences**
CGPA 3.5 (out of 4) and Provided the course is not less than 5 semesters or 2 1/2 years in the same accredited institution and the minimum entry qualification is 2Bs each in Biology and/or Chemistry and/or Physics and 3 Credits each in English, and Mathematics or Additional Mathematics and another subject at School Certificate level or its equivalent

OR

d) Bachelor's Degree level

- **Degree in Health or Pure or Applied Sciences**
CGPA 3.0 (out of 4)
- **Degree in the Arts or Humanities**
CGPA 3.5 (out of 4)

BACHELOR OF SCIENCE (HONS) HEALTHCARE MANAGEMENT

(R/723/6/0103) | (A 9630)

Now-a-days Healthcare sector is one of the fastest growing industry in the world. Healthcare management offers many different attractive careers both in healthcare and business as it has unique educational background. Healthcare management, referred to as healthcare administration, management or oversight of healthcare systems, public health systems, hospitals, entire hospital networks or other medical facilities. Asia Metropolitan University (AMU) is the first institute to offer the 4-year degree programme in Healthcare Management. It obtain the MQA Accreditation (Reg. No A 9630) science 24th November 2010 and has also been recognized by Jabatan Perkhidmatan Awam (Ref.no MOI34723).

DURATION OF STUDY

4 Years (8 Semester)

MODE OF STUDY

Full Time

INTAKE

May & September

CAREER PROSPECT

- Academician
- Healthcare Policy Professional
- Quality Control Officer
- Healthcare-entrepreneur
- Healthcare Department Manager
- Healthcare Finance Manager
- Quality and Improvement Manager
- Healthcare Administrator and
- Physician Practice Manager

ENTRY REQUIREMENTS

- i. Obtained MUET Band 3 or IELTS (5.5)/TOEFL (550) **AND**
 - a. Pass Matriculation / Pre-University / STPM programme or equivalent qualification with minimum **GPA 2.33** in TWO of the following subjects:
 - Biology
 - Physics/Mathematics
 - Chemistry
 - OR**
 - b. A-Level programme or equivalent qualification with minimum **Grade D** in TWO of the following subjects:
 - Biology
 - Physics/Mathematics
 - Chemistry
 - OR**
 - c. Recognised Diploma with minimum CGPA of 2.75 in related field;
 - OR**
 - d. Recognised Diploma with CGPA less than 2.75 in related field and a minimum of 3 years (36 months) working experience in the related field.

English proficiency for foreign students

Candidate should obtain IELTS (5.5)/TOEFL (550) paper-based or equivalent



PROGRAMME STRUCTURE

YEAR 1

- Principles of Healthcare
- Human Anatomy and Physiology I
- Introduction to Psychology
- Communication Skills in Healthcare
- English for Academic Enrichment
- Bahasa Kebangsaan A*
- Law and Ethics in Healthcare Management
- Human Anatomy and Physiology II
- Social Cultural Aspect in Healthcare
- Essentials of Medical Terminology
- Tamadun Islam and Tamadun Asia (TITAS)
- Hubungan Etnik

YEAR 2

- Accounting for Healthcare
- Disease Prevention I
- Health Informatics
- Healthcare Service and System in Malaysia
- Malaysian Government and Public Policy
- Disease Prevention II
- Health Finance and Economics
- Principles of Epidemiology
- Introduction to Pharmacology
- Leadership and Development

YEAR 3

- Health Safety and Risk Management
- Human Resource Management in Healthcare
- Organizational Behaviour and Development
- Complimentary Medicine/ Medical Tourism
- AMUnited II
- National Health Policy
- Hospital Management
- Research Methodology
- Strategic Management in Healthcare
- Geriatric Medicine/ Pharmaceutical Management

YEAR 4

- Leadership and Conflict Mgmt in Healthcare
- Emergency and Disaster Management
- Health Education and Promotion
- Quality Assurance in Healthcare
- Health Insurance / Entrepreneurial Marketing
- Research Project
- Industrial Training I (hospital)
- Industrial Training II (community)

Why Study In AMU Bachelor of Science (Hons) Healthcare Management ?



BACHELOR OF INFORMATION TECHNOLOGY (HONS)

(MQA/PA 14329)

The programme aims to produce graduates with knowledge and skills to be responsive to any organization's computing needs and to support Information Technology application, in line with national aspirations.

DURATION OF STUDY

3 years

MODE OF STUDY

Full Time

INTAKE

January, April & August

CAREER PROSPECT

- Web Developer
- Business Intelligence Analyst
- Computer Support Specialist
- Customer Care Consultant
- IT Marketing Executive

ENTRY REQUIREMENTS

- i. A pass in Matriculation or Foundation studies with minimum Cumulative Grade Point Average (CGPA) of 2.00 and a credit in Mathematics at Sijil Pelajaran Malaysia (SPM) level or its equivalent; **OR**
 - ii. A pass in Sijil Tinggi Persekolahan Malaysia (STPM) with a minimum Grade C (Grade Point (GP) 2.00) in any two subjects and a credit in Mathematics at SPM level or its equivalent; **OR**
 - iii. A Diploma in Computer Science or Software Engineering or Information Technology or Information Systems or equivalent with a minimum CGP A of 2.50 and a credit in Mathematics at SPM level or its equivalent; **OR**
 - iv. Any other Diploma in Science and Technology or Business Studies with a minimum CGP A of 2.50 may be admitted subject to a rigorous internal assessment process and a credit in Mathematics at SPM level or its equivalent.
- Candidates with CGPA below 2.50 but above 2.00 with a credit in Mathematics at SPM level or its equivalent may be admitted subject to a rigorous internal assessment process.
 - Candidate with a credit in computing related subject at SPM or STPM level or its equivalent may be given preferential consideration.

* International students must have proof of good proficiency in verbal and written English. For example International English Language Testing System (IELTS) score of 6.0 or its equivalent. If a student does not meet this requirement, HEPs must offer English proficiency courses to ensure that the student's proficiency is sufficient to meet the needs of the programme.



PROGRAMME STRUCTURE

YEAR 1

- Principles of Information Technology
- Discrete Mathematics
- Programming Concepts and Design
- Operating Systems
- Principles of Networking
- Information Systems Security
- Human Computer Interaction
- Database Systems
- Object Oriented Programming
- Data Communication
- Web Page Design

YEAR 2

- Principles of Information Technology
- Discrete Mathematics
- Programming Concepts and Design
- Operating Systems
- Principles of Networking
- Information Systems Security
- Human Computer Interaction
- Database Systems
- Object Oriented Programming
- Data Communication
- Web Page Design

YEAR 3

- Knowledge Management
- Platform Technologies
- System Development Tools and Techniques
- Network Monitoring and Security
- Research Method
- Information Technology Collaborative Project
- Internship



MASTER OF SCIENCE IN HEALTHCARE MANAGEMENT

(R2/720/7/0063) | (A9905)

MASTER OF SCIENCE IN HEALTHCARE MANAGEMENT is a programme tailored for individuals looking to become world-class leaders in healthcare management and hospital administration. The student will achieve this by developing excellent decision-making and problem-solving skills and passionate with a desire to lead health organisations through challenges. The course structure have been designed specifically for the health services sector with a focus on current technology.

DURATION OF STUDY

Full Time -12 months
Part-time -18 months

MODE OF STUDY

Full Time & Part-time

INTAKE

January & June

CAREER PROSPECT

- Hospital
- Clinical services
- Health insurance
- Academician
- Pharmaceutical Companies
- Medical Tourism
- Retirement homes
- Rehabilitation Centres
- Consulting organisation

ENTRY REQUIREMENTS

- A bachelor degree or equivalent with minimum CGPA of 2.50 in related field, as accepted by the HEP Senate; or
- A bachelor degree or equivalent in related field with CGPA of less than 2.50 and a minimum of 5 years working experience in the related field

For Postgraduate studies, International students are required to achieve a minimum score of 6.0 for IELTS OR its equivalent.

ACADEMIC PATHWAY

MSc in Healthcare Management



Doctorate in Healthcare Management / Doctorate in Public Health



Post Doctorate Award in Healthcare Management



PROGRAMME STRUCTURE

SEMESTER 1

- Governance in Healthcare Industry
- Healthcare System in Malaysia
- Healthcare Marketing
- Human Resource Management For Healthcare
- Healthcare Economics

SEMESTER 2

- Healthcare Information System
- Accounting and Finance for Healthcare
- Research Methodology
- Epidemiology
- Strategic Management In Healthcare

SEMESTER 3

- Health and Health Promotion in Healthcare
- Healthcare Operations Management
- Research Dissertation

MASTER IN BUSINESS ADMINISTRATION (MBA)

MASTER IN BUSINESS ADMINISTRATION (MBA) (GENERAL)
(R/340/7/0230) | (MQA/FA2819)

MASTER OF BUSINESS ADMINISTRATION (HUMAN RESOURCE MANAGEMENT)
(N/345/7/0880) | (MQA/FA4567)

The MBA programme provides learners with a balanced insight into the challenges of managing businesses.

The modern day manager needs to have a broad understanding of the various functions within an organization in order to effectively meet organizational goals and objectives. In addition to this, the rapid expansion of international trade means suppliers; customers and work colleagues are much more likely to work within a multicultural working environment. This in turn, requires a different set of skills to be able to manage both effectively and efficiently.

WHY YOU SHOULD PURSUE THE AMU MBA PROGRAMMES.

- Gain the tools necessary to succeed in the new market landscape
- Leverage on the benefits of the accelerated technological innovation
- Meet experienced lecturers, and adjunct professors with industry experience.
- Improve your profile, achievements and compensation

ADVANTAGES OF THE AMU MBA

- Designed for working adults with intensive classes during non-working hours.
- Learn at your own space by customising your semesters
- Leverage on the Learning Management System for a more efficient learning environment.
- Affordable and flexible tuition fees.

DURATION OF STUDY

MBA General & HRM

Full Time : 1.5 Year
Part Time : 2 Years

MODE OF STUDY

Coursework

INTAKE

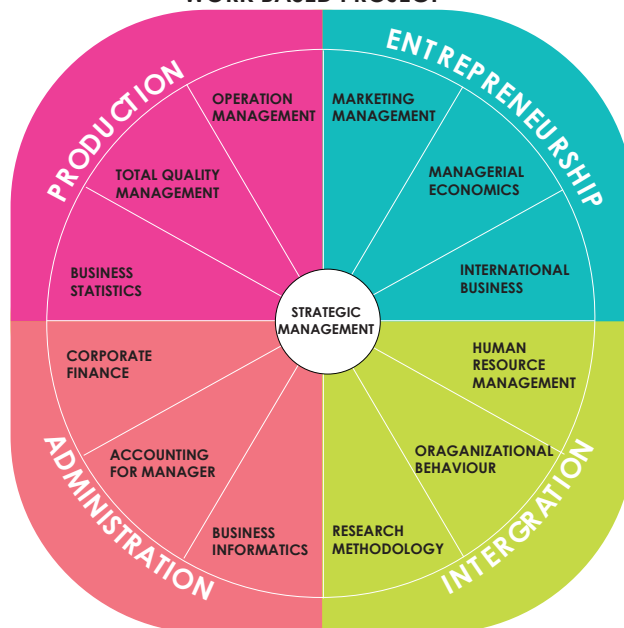
January, June & September



THE AMU MBA PROJECT

The MBA Project module provides you with an opportunity to apply the skills and knowledge that you have acquired to the resolution of a business problem, or to research an area of interest. Our work-based project is a great opportunity to work on a live management issue and to forge and develop links with employers and industry including that of your own. If you aspire to be an entrepreneur, the MBA Project can be an excellent opportunity to compile a comprehensive business plan.

WORK BASED PROJECT



EXAMINATION AND ASSESSMENT

Blended Module

- Online Activity (40%)
- Coursework (50%)
- Presentation (10%)
- No final examination

For Non-Blended Module

- Individual Case Study Assignment (30%)
- Term Paper (Work Based) & Presentations (40%)
- Final Examination (30%)



PROGRAMME STRUCTURE

MASTER IN BUSINESS ADMINISTRATION (MBA) (GENERAL) (R/340/7/0230) | (MQA/FA2819)

CORE

- Marketing Management
- Human Resource Management
- Accounting for Managers
- Managerial Economics
- Strategic Management
- Research Methodology

MAJOR

- Organisational Behaviour
- Business Informatics
- Business Statistics
- Corporate Finance

ELECTIVE (CHOOSE 2)

- Operations Management
- Total Quality Management
- International Business

PROJECT

- Project Paper

ENTRY REQUIREMENTS

- A Bachelor's degree with minimum CGPA of 2.50 out of 4.00 or its equivalent qualifications as accepted by the HEP Senate; OR
- A Bachelor's degree with CGPA Below 2.50 out of 4.00 or its equivalent qualifications can be accepted, subject to a minimum of 5 years of working experience in relevant field.

English Entry Requirement for International Student

International students are required to achieve a minimum score of 6.0 for IEL TS or its equivalent.

ENTRY REQUIREMENTS USING APEL ASSESSMENT

- The candidate should be a Malaysian more than 30 years of age in the year of application, possess at least STPM/ diploma/equivalent (e.g., foundation), with relevant work experience and passed APEL assessment.
- All applicants are subjected to APEL assessment conducted by MQA.

PROGRAMME STRUCTURE

MASTER OF BUSINESS ADMINISTRATION (HUMAN RESOURCE MANAGEMENT) (N/345/7/0880) | (MQA/FA4567)

CORE

- Marketing Management
- Human Resource Management
- Accounting for Managers
- Managerial Economics
- Research Methodology

MAJOR

- Strategic Human Resource Management
- Human Resource Development
- Training and Development
- Compensation and Benefits Management
- Industrial Relations and Labour Law

ELECTIVE (CHOOSE 2)

- Managing Occupational Safety and Health
- Performance Management and Reward Systems
- Workforce Diversity Management

PROJECT

- Project Paper

DOCTOR OF BUSINESS ADMINISTRATION (DBA)

(R/340/8/0247) | MQA/FA2966

The Doctor of Business Administration programme aims at advancing leadership. The programme primarily focuses on theories and methodologies related to research and practice, comprehensive study, processes as well as the best practices in business management. Students of this programme will develop business acuity and at the same time, enhance their overall management capabilities.

DURATION OF STUDY

Full Time

3 Years (Minimum)
6 Years (Maximum)

Part Time:

4 Years (Minimum)
8 Years (Maximum)

MODE OF STUDY

Coursework

INTAKE

January & June

EXAMINATION AND ASSESSMENT

- Individual case study papers (40%)
- Term Paper (Work Based) & Presentation (40%)
- Final Examination (20%)

ENTRY REQUIREMENTS

- Any qualifications equivalent to Master's degree (Level 7, MQF) with CGPA 3.00 or as accepted by the HEP Senate.

ENGLISH LANGUAGE ASSESSMENT (For International Students Only)

- Minimum score of IEL TS 6.0 or its equivalent.



PROGRAMME STRUCTURE

YEAR 1 TRIMESTER 1

- Strategic Marketing
- Economic Analysis for Managers
- Advanced Global Business
- Managerial Finance

YEAR 1 TRIMESTER 2

- Organizational Leadership
- Advanced Human Resource Management
- Seminar in Managerial Accounting
- Advanced Research Methodology

YEAR 1 TRIMESTER 3

- Advanced Statistic
- Decision Making Analysis
- Advanced Strategic Management
- Consultation Project 1

YEAR 2 TRIMESTER 1

- Consultation Project 2
- Dissertation – Proposal Defence

YEAR 2 TRIMESTER 2

- Dissertation – Data Analysis

YEAR 2 TRIMESTER 3

- Dissertation – Data Analysis

YEAR 3 TRIMESTER 1

- Dissertation – Write-up

YEAR 3 TRIMESTER 2

- Dissertation – Write-up

YEAR 3 TRIMESTER 3

- Dissertation – Viva Voce

POST GRADUATE CERTIFICATE IN TEACHING METHODOLOGY

(R/145/7/0012) | (A0866)

Postgraduate Certificate in Teaching Methodology is a program to help develop the ability to apply and utilize a range of teaching approaches that will enhance the effectiveness of teaching and learning, both in the theoretical and practical aspects. Its uniqueness, in comparison to other similar programs, is the fact that it is tailored to suit the requirement of all types of academic proficiency. This program is classified as MQF (Malaysian Qualification Framework) level 7 where by its competency is equivalent of Masters level.

DURATION OF STUDY

Full time: 9 months
Part time: 12 months

MODE OF STUDY

Coursework

INTAKE

January & September

CAREER PROSPECT

- This course helps to develop the educational careers across a range of institutions. It provides insights into key educational issues that are useful to leaders, managers, teachers and others with an interest in education.

JOB SCOPE

- Lecturers in institutes of technology, polytechnics and universities
- Tutors in private training establishments
- Trainers in the workplace
- Facilitators in community adult education

ENTRY REQUIREMENTS

1. A Bachelor's Degree or its equivalent, with a minimum CGPA of 2.50, as accepted by the HEP's Senate;
OR
2. A Bachelor's Degree or its equivalent, not meeting CGPA of 2.50, can be accepted subject to a minimum of five (5) years working experience in a relevant field.



PROGRAMME STRUCTURE

SEMESTER 1

- Foundation in Teaching & Learning
- Teaching Methodology
- Student Assessment System
- Curriculum Planning & Management
- Micro & Macro Teaching

SEMESTER 2

- Teaching Practicum

DOCTOR OF PHILOSOPHY IN MANAGEMENT (PHD)

(R/345/8/0324) | (MQA/FA10029)

The Doctor of Business Administration programme aims at advancing leadership. The programme primarily focuses on theories and methodologies related to research and practice, comprehensive study, processes as well as the best practices in business management. Students of this programme will develop business acuity and at the same time, enhance their overall management capabilities.

DURATION OF STUDY

Full Time

3 Years (Minimum)
6 Years (Maximum)

Part Time:

4 Years (Minimum)
8 Years (Maximum)

MODE OF STUDY

Research

INTAKE

January, June & September

ENTRY REQUIREMENTS

1. A Master degree with CGPA at 3.0 or equivalent in business related field as accepted by the HEP Senate;
OR
2. Other qualifications equivalent to a Master's degree as accepted by the HEP Senate.

For postgraduate studies, international students are required to achieve a minimum score of 6.0 for IELTS **OR** its equivalent.

Note:

For Doctoral degree by Research as stated in the Standards: Master's and Doctoral Degree:

- i. There shall be no direct entry from Bachelor's degree level to Doctoral degree level.
- ii. Candidates with Bachelor's degree who are registered for Master's degree by Research programmes may apply to convert their candidacy to the Doctoral degree programmes within ONE (1) year after Master's degree registration, subjected to:
 - a. having shown competency and capability in conducting research at Doctoral degree level;
 - b. rigorous internal evaluation by the HEP; and
 - c. approval by the HEP Senate.



PROGRAMME STRUCTURE

YEAR 1 - TRIMESTER 1

- Advanced Research Methodology

YEAR 1 - TRIMESTER 2

- Advanced Quantitative Analysis
- Advanced Qualitative Analysis

YEAR 1 - TRIMESTER 3

- Thesis - Proposal Defence

YEAR 2 - TRIMESTER 1

- Thesis - Proposal Defence

YEAR 2 - TRIMESTER 2

- Thesis - Data Analysis

YEAR 2 - TRIMESTER 3

- Thesis - Data Analysis

YEAR 3 - TRIMESTER 1

- Thesis - Write-up

YEAR 3 - TRIMESTER 2

- Thesis - Write-up

YEAR 3 - TRIMESTER 3

- Thesis - Viva Voce



asia
METROPOLITAN
UNIVERSITY
EMPOWERING FUTURE LEADERS
(KPT/JPT/DFT/US/B 37)



JOHOR BAHRU CAMPUS
DU054(J)

No. 6, Jalan Lembah Bandar Seri Alam,
81750 Johor Bahru, Malaysia.

Tel: +60 (7) 386 1076
+60 (7) 386 1077



www.amu.edu.my



info@amu.edu.my
apply@amu.edu.my
international@amu.edu.my



ASIA Metropolitan University



AMU Uni



[asiametropolitanuni](https://www.instagram.com/asiametropolitanuni)



[asiametropolitanuniversity](https://www.linkedin.com/company/asiametropolitanuniversity)