

Programme Handbook

ASIA METROPOLITAN UNIVERSITY



2
0
2
4



CONTACT US
info@amu.edu.my

Vice Chancellor Welcome Message

It is with great pleasure that I welcome you to the Asia Metropolitan University family; a family that has grown leaps and bounds since our inception in 2004. Asia Metropolitan has established an institution dedicated to the growth and nurturing of our students not only through our programmes accredited by the Malaysian Qualifications Agency (MQA) and Ministry of Higher Education (MOHE), but the provision of facilities and extracurricular activities to complement their academic progression. The University believes that it is fundamental for a student to attain an all-rounded education which includes strong core values and personal character development, contributing to our aims in “Empowering Future Leaders”.

I would like to congratulate each and every one of you of being a part of our growing community here at Asia Metropolitan University. This journey that you will be undertaking will be one that is essential in this phase of your lives and I strongly urge everyone to maximise the opportunities provided. The University has worked extremely hard in the provision of the necessary learning and development to strengthen your knowledge in your respective fields of study.

It is imperative that as students of the University, you not only focus on the formal learning, but undertake leadership roles and immerse yourselves in extracurricular activities to create, harness and develop your core competencies beyond the classrooms. Do not be afraid to take a step forward, do not be afraid of stepping out of your comfort zones; it is part and parcel of growing. Learning is one that may be a challenging process, but it is also one that is enriching and joyous when you reap the benefits of collaborative learning amongst your peers and lecturers.

Asia Metropolitan University has been specially equipped with the right plan of academic staff and facilities to prepare its students with the right skills, knowledge and competencies to remain relevant not only within Malaysia but on a global scale. I would like to wish each and every student the best of luck in undertaking this new journey. May this path you take be one that is full of experiences, invaluable lessons and wonderful memories.

PROFESSOR DR MOHAMAD KHAN JAMAL KHAN
Vice Chancellor



ABOUT US

From our humble inception in 2004, Asia Metropolitan University (AMU) has grown into a full-fledged university offering a wide range of programmes which bears testimony to our impressive track record within the Malaysian private-higher education industry. In line with the recent developments in the industry and within our institution, AMU is focused on producing trained, qualified, competent graduates for domestic and international markets in health sciences and various other disciplines. AMU aims to be “The University of Choice” within the local and global education landscape. Above all, we envision our students to come from diverse cultures and background who will be able to significantly contribute to society and mankind.



Currently, AMU provides a comprehensive educational pathway beginning from foundation and diploma studies for post-secondary school certificate holders who can then move on to pursuing undergraduate studies. Beyond that AMU also offers a wide range of masters and doctoral degree programmes. We have revolutionised our approach to ensure the quality and delivery of our academic programmes are of the highest standards. Besides striving for continuous improvement, we have repositioned ourselves to meet the changing landscape of the Malaysian higher education industry whereby we are committed to prepare our graduates with the right skills and knowledge to enter the competitive and challenging workforce

OUR VALUES



Empowering Future Leaders

At AMU, we believe that it is vital to incorporate leadership skills and qualities among our students. As part of student support, instilling soft skills such as leadership characteristics among students has always been our foremost aspect besides providing quality education.



Creating a Vibrant Campus

We have a wide range of student societies and clubs here at AMU. While providing exciting opportunities to socialise, develop new skills and learn new cultures, these student centred organisations also serve to enhance our vibrant learning community.



Emphasising Employability

Our student employability is a core focus of the university in its aim to nurture "leaders". Our dedicated employability unit is geared towards enhancing and equipping our graduates with the necessary skills set to increase their employability amidst a congested landscape, thus giving them the edge.

OUR CAMPUS

Asia Metropolitan University Bandar Seri Alam, Johor

No.6, Jalan Lembah, Bandar Seri Alam, 81750
Johor Bahru, Malaysia.

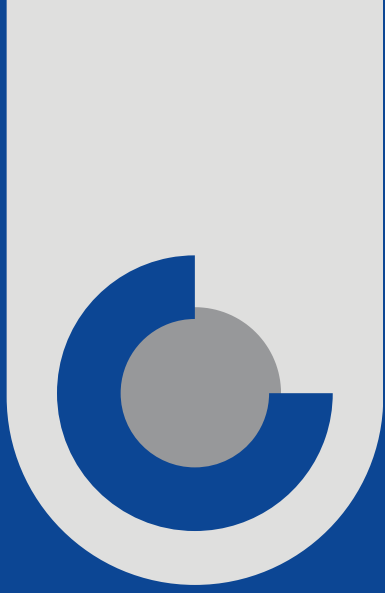
- *Located just 20 km away from the city centre of Johor Bahru and Singapore Causeway.*
- *30 km from Plaza Tol Kempas (North-South Exit).*



Asia Metropolitan University Cyberjaya Campus, Selangor

Level 1 Tower Block, Pesiaran Bestari, Cyber 11
63000 Cyberjaya.

- *Located just 20 minutes away from the Kuala Lumpur International Airport.*
- *36 km from the Kuala Lumpur City Center.*



Vision Mission



Vision

"To uplift communities with equitable access to quality education."

Mission

"To transform societies with holistic learning and outstanding student experiences."



International Recognition



Asia Metropolitan University is proud to be ranked 8th on the AppliedHE™ Private University Ranking: ASEAN. These ranking scores are being calculated to clearly show the institutions' relative performance against their peers within the ASEAN region in different categories.

The AppliedHE™ is a sophisticated higher education ranking system that has considered different dimensions of an institutions' performance based on multiple sources of data. The institution is assessed based on the quality of its teaching and learning, employability, research, community engagement, internationalisation, and institutional reputation. The University has continuously taken the required steps to fulfil its fundamental goal of producing dynamic graduates who are equipped with the required skills and competence. AMU welcomes more international students with the hope of diversifying students' learning experience with a multiracial blend of culture and perspectives.



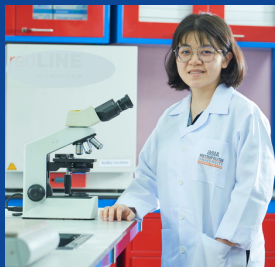
Ministry of Higher Education Recognition



Asia Metropolitan University (AMU) was rated VIABLE in the Emerging University category by the Ministry of Higher Education Malaysia. A VIABLE rating in the Emerging University category indicates that AMU is a promising institution with the potential to develop into a leading university in the future.

The university has made significant progress in recent years, and it is now well-positioned to continue its growth and development.

LEARNING FACILITIES



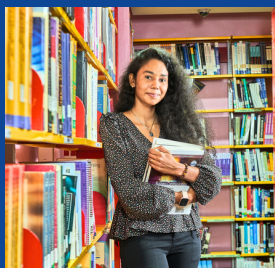
Science Laboratories

To add spark to the mission of education and prepare students for the competitive world, the campus has multiple well-designed laboratories that complement teaching and learning sessions conducted by highly experienced lecturers.



Lecture Halls

Equipped with the latest technology, AMU's lecture halls are designed to facilitate interactive learning and the use of multimedia contents to enhance student experience.



Library

Our library is a gateway to a comprehensive collection of books, journals, periodicals, student projects and other related publications to support learning and research.



Computer Laboratories

Students at AMU have access to state-of-the-art computer facilities that include the latest PCs and workstations with Internet connection, operating systems, software suites and commercial programming software in each IT lab.



STUDENT EXPERIENCE & LEARNING SELS

Student Experience & Learning Support (SELS) at AMU strives to create a vibrant campus community, providing programmes and services to support students and enrich their learning experiences at Johor Bahru. Learning is enriched by the students' living environments and their engagement in a wide range of co-curricular pursuits. These activities are driven by student interests and initiatives, with SELS staff providing a context conducive to their growth. This platform fosters educational and personal development for students to build on a common ground as well inspire leadership, create enthusiasm, empower and instill confidence in them.



LEARNING UNIT



The mission of counseling services

- To provide professional mental health counseling and consultation services for students
- Incorporates a brief-therapeutic model with an emphasis on developmental counseling directed at helping students succeed in the university environment
- Increase healthy lifestyle and coping behaviors among students

Services include:



Individual Counselling

Individual develop better self awareness and coping strategies one in one



Group Counselling

Group of individuals with similar concern explore together through discussions with counselor



Crisis Intervention

Assist individual in crisis situation immediately with initiation of counseling sessions



Assistance in Referral to Community Resources

Assist and guide individual to external community resources



Career Guidance & Consultations

Assist and guide individual with right assessments, strategies & perspectives

Scholarship & FINANCIAL AID



Bursary Awards

Up to 30% Tuition Fee waiver for selected Degree and Diploma programmes.



Foundation Scholarship

Students who wish to enroll for Foundation programmes will be entitled for 100% scholarships and may proceed to further a degree in a related field offered by the University. *with term & conditions



National Higher Education Loan Fund (PTPTN)

Students applying to study at Asia Metropolitan University are eligible for PTPTN funding.



EPF Withdrawal

Students enroll into AMU programmes except (Executive & Professional programmes) may apply for EPF withdrawal fund to pay their tuition fees.



AFFIN EDUCATION FINANCING-I

It is a Shariah-compliant scheme designed specially for qualified individuals to obtain financial assistance for their education plan. Based on the concept of Ijarah, the financing will cover their education programme for a truly seamless study experience.



MALAYSIAN COMMUNITY & EDUCATION FOUNDATION (MCEF) STUDENT LOAN SCHEME (SLS)

Providing financial assistance to Malaysian Individual applicants who have either inadequate or no other means of financial support to pursue their education in recognized institution of higher learning.

OUR PROGRAMMES



FOUNDATION- SPM/O'LEVEL/ EQUIVALENT

- Foundation in Business Studies- R2/010/3/0070 | MQA/FA 1537
- Foundation in Science- R3/010/3/0135 | A8668
- Foundation in Information Technology- N/482/3/0165 | MQA/FA 11228



DIPLOMA- SPM/O'LEVEL/ EQUIVALENT

- Diploma in Business Administration- R2/345/4/0217 | MQA/FA 1895
- Diploma in Accounting- N/344/4/0532 | MQA/FA 10779
- Diploma in Information Technology- R/0611/4/0181 | MQA/FA 10561
- Diploma in Healthcare- R2/723/4/0147 | A6719



BACHELOR- STPM/A'LEVEL/ UEC/EQUIVALENT

- Bachelor of Business Administration (Hons)- R2/340/6/0207 | MQA/FA 1737
- Bachelor of Accountancy (Honours)- N/0411/6/0055 | MQA/FA 11416
- Bachelor of Information Technology (Honours)- N/482/6/0215 | MQA/PA 14329
- Bachelor of Science (Hons) Healthcare Management- R2/723/6/0103 | A9630
- Bachelor of Biomedical Science (Hons)- R2/720/6/0122P | A10078



POSTGRADUATE- BACHELOR/MASTER/APEL/EQUIVALENT

- Master of Science in Healthcare Management- R2/0910/7/0021 | A9905
- Master in Business Administration (General)- R2/340/7/0230 | MQA/FA 2819
- Master in Business Administration (Human Resource Management)- R/345/7/0880 | (FA 4567)
- Master in Business Administration (MBA) Open & Distance Learning (ODL)-NDL/340/7/0781 | MQA/FA 14586
- Doctor of Business Administration- R/340/8/0247 | MQA/FA 2966
- Doctor of Philosophy in Management (PhD)- R2/0414/8/0021 | MQA/FA 10029
- Doctor of Philosophy (PhD)- N/0417/8/0001 | MQA/PA15624
- Post Graduate Certificate in Teaching Methodology- R2/145/7/0012 | MQA/FA 0866

About this programme

Our programme is designed with courses which are relevant and focused to the field of Business Studies/ Business Administration. Thereby, the students will be equipped with the knowledge and skills to prepare them for admission into bachelor programmes in Business Studies/ Business Administration. This programme has attained full accreditation status by Malaysian Qualifications Agency (MQA) in 2013.

DURATION OF STUDY

1 year

MODE OF STUDY

Full Time

ACADEMIC PATHWAYS

- Degree in Business Administration
- Degree in Accounting
- Degree programmes in management & arts

PROGRAMME STRUCTURE

SEMESTER 1

- Introduction to Business
- Principles of Accounting
- Business Law
- Introduction to Information Technology
- English

SEMESTER 2

- Introduction to Entrepreneurship
- Business Mathematics
- Business Communication
- Interpersonal Communication Skills
- Introduction to Marketing

SEMESTER 3

- Basic Business Statistics
- Introduction to Economics (Micro and Macro)
- Business Ethics
- Organisational Behaviour
- Critical Thinking

ENTRY REQUIREMENTS

General requirement:

- PASS SPM with 5 credits in any subjects AND Pass in English subject.
- Pass UEC with minimum Grade B in any three (3) subjects

Progression to the field of Accounting & Information Technology:

- PASS SPM/ O Level with minimum 5 credits including Mathematics OR Additional Mathematics **AND** pass in English Subject/equivalent qualification.

Other field of studies: Kindly refer to the Malaysian Qualification Agency (MQA) guidelines at <https://www.mqa.gov.my/>

Note:

- The determination of eligibility for a programme by the Higher Education Provider is subject to Standards, Programme Standards, Regulations of Professional Bodies, Regulations by Authorities and amendments made from time to time.
- Pass SPM means passing Bahasa Melayu and Sejarah (starting from SPM Year 2013).
- The grade requirements for Bahasa Melayu and English at the SPM level for admission to programmes under professional bodies is based on the standards, manuals and regulations of the respective professional bodies.
- International students may pursue Foundation in Business Studies with an equivalent academic qualification.

About this programme

Foundation in Science (FIS) is a comprehensive pre-university programme which aims to provide students with the scientific knowledge as a preparation in pursuing their academic path in the field of science and technology at higher education level. Our programme is designed to offer an excellent and worthy pre-university education that will augment the relevant pathway towards achieving industry related careers specifically in the field of Allied Health Sciences and Healthcare Management. This programme has attained full accreditation status by Malaysian Qualifications Agency (MQA) in 2009.

DURATION OF STUDY

1 year

MODE OF STUDY

Full Time

ACADEMIC PATHWAYS

- Bachelor of Biomedical Science (Hons)
- Bachelor of Science (Hons) Healthcare Management

PROGRAMME STRUCTURE

SEMESTER 1

- English I
- Mathematics I
- Biology I
- Behavioural Sciences: Psychology
- Fundamental of Information Technology

SEMESTER 2

- English II
- Biology II
- Physics I
- Chemistry I
- Introduction to Business

SEMESTER 3

- English III
- Physics II
- Chemistry II
- Mathematics II
- Interpersonal Communication Skills

ENTRY REQUIREMENTS

Applicants must ensure the entry requirements for the Foundation in Science programme taking into account specific subject requirements at the SPM level if students choose to pursue studies in the following fields:

Further studies in Allied Health Sciences:

- Pass SPM or its equivalent with at least Credits in 5 subjects, including Biology, Chemistry, Physics, Mathematics, and another subject.
- Pass UEC with minimum Grade B in any three (3) subjects

Other field of studies: Kindly refer to the Malaysian Qualification Agency (MQA) guidelines at <https://www.mqa.gov.my/>

Note:

- The determination of eligibility for a programme by the Higher Education Provider is subject to Standards, Programme Standards, Regulations of Professional Bodies, Regulations by Authorities and amendments made from time to time.
- Pass SPM means passing Bahasa Melayu and Sejarah (starting from SPM Year 2013).
- The grade requirements for Bahasa Melayu and English at the SPM level for admission to programmes under professional bodies is based on the standards, manuals and regulations of the respective professional bodies.
- International students may pursue Foundation in Science with an equivalent academic qualification.



About this programme

The Foundation Programme in IT Studies is a one-year programme. It is designed to provide students with the necessary foundational knowledge on business and information technology to enable them to undertake a rigorous degree programme in Information Technology or Computer Sciences.

DURATION OF STUDY

1 year

MODE OF STUDY

Full Time

ACADEMIC PATHWAYS

- Degree in Information Technology
- Degree in Computer Science
- Other degree programmes in related field

PROGRAMME STRUCTURE

SEMESTER 1

- Fundamental of Mathematics
- Introduction to Information Technology
- English
- Introduction to Networking
- Introduction to Social Media
- Interpersonal Communication Skills

SEMESTER 2

- Fundamental of Database
- Fundamental of Programming
- Fundamental of Operating System
- Fundamental of Statistics
- Critical Thinking

SEMESTER 3

- Introduction to Multimedia
- Introduction to IT Security
- Fundamental of Web Page Design

ENTRY REQUIREMENTS

Applicants must ensure the entry requirements for the Foundation in Information Technology programme taking into account specific subject requirements at the SPM level if students choose to pursue studies in the following fields:

Progression to the field of Information Technology:

- PASS SPM or its equivalent with at least credits in 5 subjects, including Mathematics or Additional Mathematics AND pass in English Subject/equivalent qualification.

Other field of studies: Kindly refer to the Malaysian Qualification Agency (MQA) guidelines at <https://www.mqa.gov.my/>

Note:

- The determination of eligibility for a programme by the Higher Education Provider is subject to Standards, Programme Standards, Regulations of Professional Bodies, Regulations by Authorities and amendments made from time to time.
- Pass SPM means passing Bahasa Melayu and Sejarah (starting from SPM Year 2013).
- The grade requirements for Bahasa Melayu and English at the SPM level for admission to programmes under professional bodies is based on the standards, manuals and regulations of the respective professional bodies.
- International students may pursue Foundation in Information Technology with an equivalent academic qualification.



About this programme

This 2.5-year intensive programme seeks to provide students with the practical skills and knowledge to perform important administrative functions within a business or an organization. The programme instills leadership qualities to enable our graduates to not just be a competent employee but to showcase self-initiative and leadership traits that would give them the edge over successful accomplishments.

DURATION OF STUDY

2.5 years

MODE OF STUDY

Full Time

CAREER PROSPECTS

- Administrative Assistant
- Sales Assistant
- Marketing Assistant
- Customer Service Assistant
- Human Resource Assistant

ENTRY REQUIREMENTS

- Possesses SPM or equivalent qualification with at least credits in THREE subjects; OR
- Possesses SKM (Level 3 MQF) in the related field (PPT is required to conduct screening and enhancement programmes relevant to the field of programme); OR
- A Certificate (Level 3 MQF) or its equivalent in the related field with a minimum CGPA of 2.00; OR
- A pass in Sijil Tinggi Pelajaran Malaysia (STPM) with at least Grade C (GP 2.00) in any subject; OR
- A pass in Sijil Tinggi Agama Malaysia (STAM) with at least Grade Maqbul;

ENGLISH COMPETENCY REQUIREMENT (INTERNATIONAL STUDENT)

- Achieve a minimum of Band 3 in MUET OR equivalent to CEFR (High B1).

Admission criteria through APEL.A :-

- At least 20 years of age in the year of application.
- Possess relevant work experience.
- Pass the APEL.A assessment for Diploma level.

PROGRAMME STRUCTURE

YEAR 1

- Introduction to Business
- Fundamentals of Marketing
- Fundamentals of Accounting
- Communicative English
- Fundamentals of Management
- Business Communication
- Bahasa Kebangsaan A
- Fundamentals of Human Resource Management
- Introduction to Microeconomics
- Business Mathematics
- Fundamentals of Financial Management
- Communication in Malay 1
- Penghayatan Etika dan Peradaban/ Bahasa Melayu Komunikasi 1
- Communication & Presentation Skills
- Critical and Creative Thinking Skills
- Youth Development

YEAR 2

- Organizational Behaviour
- Business Statistics
- Entrepreneurship
- Business Law
- Business Ethics
- AMUnited 1
- Psychology at Workplace
- Financial Accounting
- Introduction to Macroeconomics
- Innovation Management
- Principles & Practice of Selling
- Introduction to Information Technology
- Fundamentals of Operations Management
- Risk Management
- International Business

YEAR 3

- Internship

About this programme

While focusing more on practical knowledge, the diploma programme will equip students with the key competencies to perform accounting operations as part of any company. They will be able to gain employment in any commercial organisations, the public sector, the financial industry or consulting and accounting firms.

DURATION OF STUDY

- 2 years (full time)
- 3 years 5 months (part time)

MODE OF STUDY

Full Time & Part Time

ENTRY REQUIREMENTS

- Possesses Sijil Pelajaran Malaysia (SPM) or its equivalent with a minimum of 3 credits including Mathematics and a pass in English; OR
- Possesses Sijil Kemahiran Malaysia (SKM) Level 3/Sijil Vokasional Malaysia (SVM) in a related field (The HEPs are required to conduct screening and provide appropriate bridging courses in Mathematics); OR
- Possesses Sijil Tinggi Persekolahan Malaysia (STPM) or its equivalent, with a minimum of Grade C (GP 2.0) in any subject, and credits in Mathematics and a pass in English at SPM level; OR
- Possesses Sijil Tinggi Agama Malaysia (STAM) with a minimum grade of Maqbul (pass) and credits in Mathematics and a pass in English in SPM level OR
- Possesses a Certificate or its equivalent (Level 3, MQF) in the related field with at least CGPA of 2.00; OR
- Other equivalent qualifications recognised by the Malaysian Government.

ENGLISH COMPETENCY REQUIREMENT (INTERNATIONAL STUDENT)

- Minimum score IELTS of 5.5 or equivalent

Admission criteria through APEL.A :-

- At least 20 years of age in the year of application.
- Possess relevant work experience.
- Pass the APEL.A assessment for Diploma level.

CAREER PROSPECTS

- Account Assistant
- Audit Assistant
- Administration Assistant
- Tax Assistant

PROGRAMME STRUCTURE YEAR 1

- Introduction to Business
- Business Statistics
- Fundamentals of Accounting
- Business Mathematics
- Fundamentals of Management
- Communicative English
- Bahasa Kebangsaan A (without SPM credit)
- Business Ethics
- Financial Accounting
- Introduction to Information Technology
- Introduction to Microeconomics
- Penghayatan Etika dan Peradaban/ Bahasa Melayu Komunikasi 1
- Cost Accounting
- Fundamentals of Financial Management
- Critical & Creative Thinking Skills
- Youth Development

YEAR 2

- Business Law
- Financial Reporting 1
- Entrepreneurship
- Malaysian Taxation 1
- Introduction to Macroeconomics
- AMUnited 1
- Computerised Accounting
- Management Accounting
- Audit and Assurance
- Financial Reporting 2
- Malaysian Taxation 2
- Psychology at Workplace
- Industrial Training (Internship)
- Accounting Collaborative Project

About this programme

This programme will allow students to become skilled, innovative and work-ready professionals in the information technology industry. It provides hands-on exposure and valuable training with new technologies and solutions.

ENTRY REQUIREMENTS

- Possesses SPM with at least THREE (3) credits in any subjects (inclusive of Mathematics or any equivalent qualification); OR
- A pass in Sijil Tinggi Persekolahan Malaysia (STPM) with a minimum grade of C [Cumulative Grade Point Average (CGPA) 2.00] in any subject or equivalent qualification and a credit in Mathematics at SPM level or its equivalent; OR
- A pass in Sijil Tinggi Agama Malaysia (STAM) with a minimum grade of Maqbul (Pass) and a credit in Mathematics at SPM level or its equivalent; OR
- Possesses SKM Level 3 and a credit in Mathematics at SPM level or its equivalent; OR
- A Certificate (Level 3, MQF) in any qualification with at least a CGPA of 2.00; OR
- A pass in any qualification equivalent to certificate (Level 3, MQF); OR
- Other relevant & equivalent qualifications recognized by the Malaysian Government.

Notes:

- Candidates with a pass in Mathematics at an SPM level or its equivalent may be admitted if the certificate programme contains subjects in Mathematics that are equivalent to Mathematics at SPM level.
- Candidates with a pass in Mathematics at SPM level and without a related certificate need to take a reinforcement Mathematics subject with appropriate topics in the discipline of Computing at the beginning of the study.
- Candidates with a credit in a Computing-related subject at SPM level or its equivalent may be given preferential consideration.

ENGLISH COMPETENCY REQUIREMENT (INTERNATIONAL STUDENT)

- Achieve a minimum score of 4.0 in the IELTS or equivalent.
- If a student does not meet this requirement, the HEP must offer English proficiency courses to ensure that the student's proficiency is sufficient to meet the needs of the programme.

Admission criteria through APEL.A :-

- i. At least 20 years of age in the year of application.
- ii. Possess relevant work experience.
- iii. Pass the APEL.A assessment for Diploma level.

DURATION OF STUDY

2 year 4 months

MODE OF STUDY

Full Time

CAREER PROSPECTS

- Computer Technician
- IT System Analyst
- Web Programmer
- Project Administrator

PROGRAMME STRUCTURE

YEAR 1

- Principles of Information Technology
- Discrete Mathematics
- Principles of Networking
- Multimedia Technology
- Communicative English
- Bahasa Kebangsaan A
- English for Information Technology
- Fundamentals of System Analysis and Design
- Programming Concepts and Design
- Malaysian Studies/ Communication in Malay 2
- Fundamentals of Management
- Database System
- Entrepreneurship
- Critical & Creative Thinking Skills
- Youth Development

YEAR 2

- Web Page Design
- Operating System
- Fundamentals of Wireless Networking
- Information Systems Security
- AMUnited 1
- Internet Programming
- Object-Oriented Programming
- Computer Architecture
- Computer Human Interaction
- Psychology At the Workplace
- Data Structure
- Data Communication
- Internet of Things

YEAR 3

- Practical (Internship)

About this programme

Diploma in Healthcare is a 3 years programme which provides students with the knowledge in healthcare organizational values, strategies and philosophies, paving the way for graduates to obtain task-performing skills to be applied in a healthcare setting upon graduation.

DURATION OF STUDY

3 years (9 semesters)

MODE OF STUDY

Full Time

ACADEMIC PATHWAYS

- Hospital Administrative Assistant
- Health Administrative Assistant
- Claims Processing Assistant
- Dental Admin Assistant
- Clinic Administrative Assistant
- Hospital Facilities Assistant
- Hospital Support Service Assistant

ENTRY REQUIREMENTS

1. SPM or equivalent with PASS in Bahasa Malaysia and English and 3 credits in the following subjects:
 - Mathematics or ONE science subject (Biology/Physics/Chemistry/General science); and
 - Any other TWO subjects (including Bahasa Malaysia and/or English).
2. GCE/O Level or equivalent with PASS in Bahasa Malaysia and English and 3 credits (Grade C) in the following subjects:
 - Mathematics or ONE science subject (Biology/Physics/Chemistry/General science); and
 - Any other TWO subjects (including Bahasa Malaysia and/or English).
3. Certificate related to Health Sciences with minimum CGPA 2.50. OR
4. Pass SKM (Level 3 MQF) in related field (Note: The institution may conduct appropriate screening and guidance in line with the field of programme).

ENGLISH COMPETENCY REQUIREMENT (INTERNATIONAL STUDENT)

Achieve a minimum of Band 3 in Malaysian University English Test (MUET) OR equivalent to Common European Framework of Reference for Languages (CEFR) (High B1).

Admission criteria through APEL.A :-

- i. At least 20 years of age in the year of application.
- ii. Possess relevant work experience.
- iii. Pass the APEL.A assessment for Diploma level.

PROGRAMME STRUCTURE

YEAR 1

- Introduction to Healthcare
- Behavioral Science
- Human Anatomy & Physiology
- Basic Microbiology
- Communicative English
- Introduction to Environmental Health
- Medical Ethics
- Health & Social Care Services
- Introduction to Pharmacology
- Malaysian Studies
- Youth Development
- Critical and Creative Thinking Skills
- Communication and Supportive Skills

YEAR 2

- Current Issues in Health
- Medical Office Management
- Basic Immunology
- Health and Safety
- Amunited 1
- Business Communication
- Health Promotion
- Lifespan Management
- Professional Development
- Management of Medical Inventory
- Health Issues for Specific Groups
- Epidemiology

YEAR 3

- Healthcare Marketing
- Biostatistics
- Healthcare Human Resource
- Healthcare Management Information System
- Ward and Lab Management
- Waste Management
- Healthcare Accounting
- Risk Management
- Practical Training in Hospitals / Healthcare Industry

EDUCATIONAL PATHWAY



BACHELOR OF BUSINESS ADMINISTRATION (HONS)

(R2/340/6/0207) | (MQA/FA1737)

About this programme

Developed with an aim of creating successful managers, entrepreneurs and business leaders, this 3 years programme brings together the key elements needed for one to succeed in the business world. It's rigorous curriculum will ensure students to gain a deeper understanding of theories in action through business case studies while being given the opportunity to practice in real-life projects.

CAREER PROSPECTS

- Sales Executive
- Marketing Officer
- Financial Analyst
- Business Consultant
- Administrative Executive
- HR Officer
- HR Executive

DURATION OF STUDY

3 years

MODE OF STUDY

Full Time

ENTRY REQUIREMENTS

- Pass STPM examination or its equivalent with a minimum Grade C (NGMP 2.00) in two subjects; OR
- Pass STAM examination with a minimum Jayyid grade; OR
- Pass Matriculation/Foundation its equivalent with a minimum CGPA of 2.00; OR
- Pass Diploma (MQF Level 4) or its equivalent with a minimum CGPA of 2.00; OR
- Pass Advance Diploma (MQF Level 5) or its equivalent with a minimum CGPA of 2.00; OR
- Pass DKM/DLKM/DVM (Note: The institution may conduct appropriate screening and guidance in line with the field of programme).
- International Baccalaureate Diploma - Pass IB Diploma with Min. 24 points and above in any relevant 6 subjects

ENGLISH COMPETENCY REQUIREMENT (INTERNATIONAL STUDENT)

- Achieve a minimum of Band 3 in MUET OR equivalent to CEFR (Low B2).

ADMISSION CRITERIA THROUGH APEL.A :-

- At least 21 years of age in the year of application.
- Possess relevant work experience.
- Pass the APEL.A assessment for Bachelor's degree level

PROGRAMME STRUCTURE

YEAR 1

- Malaysian Business Environment
- Business Mathematics
- Accounting for Decision Makers
- Organisation Management
- English for Academic Enrichment
- Bahasa Kebangsaan A
- Microeconomics for Business Decisions
- Principles of Marketing
- Accounting Practice
- Public Speaking and Presentation Skills
- Macroeconomics in the Global Economy
- Human Resource Management
- Foundations of Law
- Management Information System
- Integrity and Anti-Corruption
- Penghayatan Etika Peradaban (PEP)/ Bahasa Melayu Komunikasi 2
- Falsafah dan Isu Semasa/ Malaysian Studies 3

YEAR 2

- Principles of Finance
- Leadership & Professional Development
- Business Communication Skills
- Organisational Behaviour
- Psychology at the workplace
- Selling & Sales Management
- Financial Management
- Managerial Accounting
- AMUnited 2
- Environmental Management for Business
- Operations Management
- Business Ethics & Corporate Social Responsibility
- Business Research Methods

YEAR 3

- Business Statistics
- Project Paper
- Strategic Management
- Entrepreneurship
- Industrial Attachment

Major in Marketing

- Consumer and Buying Behaviour
- Marketing Management
- International Marketing
- Services Marketing
- Strategic Marketing Planning
- Integrated Marketing Communication
- Distribution Management
- E-marketing

Major in Human Resource

- Organizational Development & Change
- Quality Management
- Performance Management
- Employee Recruitment and Selection
- Compensation Management
- Training and Development Management
- Labour and Industrial Relations Law
- Occupational Safety and Health Policies, Issues & OSH Challenges at Workplace

About this programme

Bachelor of Accountancy (Hons) is designed to provide graduates with intellectual skills in the specialised field of accountancy and global business environment. This programme provides a wide spectrum of knowledge and skills required for a career in the accountancy and finance professions. The curriculum covers key areas such as financial accounting & reporting, management accounting & control, accounting information systems, audit & assurance, public sector accounting, taxation, corporate governance, and professional values & ethics.

CAREER PROSPECTS

- Costing Executive
- Auditor
- Credit Control Officer
- Tax Executive
- Account Executive
- Finance Executive
- AP & AR Officer

DURATION OF STUDY

4 years

MODE OF STUDY

Full Time

ENTRY REQUIREMENTS

Malaysian University English Test (MUET) Band 2 AND

- Possesses Sijil Tinggi Persekolahan Malaysia (STPM) or its equivalent, with a minimum of Grade C+ (GP 2.33) in two subjects, and credits in Mathematics and a pass in English at SPM level; OR
- Possesses Sijil Tinggi Agama Malaysia (STAM) with a minimum grade of Jayyid (good) and credits in Mathematics and a pass in English in SPM level; OR
- Possesses a diploma (Level 4, MQF) in accounting or related field, or its equivalent with minimum of CGPA of 2.50. OR
- Possess a Matriculation/Foundation qualification or its equivalent with a minimum CGPA of 2.50, and credits in Mathematics and a pass in English at SPM level; OR
- Possesses a Diploma Kemahiran Malaysia (DKM)/ Diploma Lanjutan Kemahiran Malaysia (DLKM)/ Diploma Vokasional Malaysia (DVM) in accounting or related field with minimum of CGPA 2.50 subjected to HEP Senate/ Academic Board's approval, refer note 2; OR
- Possess an advanced diploma (Level 5, MQF) in accounting or related field with a least CGPA of 2.50 OR
- International Baccalaureate Diploma - Pass IB Diploma with Min. 26 points and above in 6 subjects including Mathematics OR
- Other relevant equivalent qualifications recognized by the Malaysian Government.

ENGLISH COMPETENCY REQUIREMENT (INTERNATIONAL STUDENT)

- Minimum score IELTS of 5.5 or equivalent

Admission criteria through APEL.A :-

- At least 21 years of age in the year of application.
- Possess relevant work experience.
- Pass the APEL.A assessment for Bachelor's degree level

PROGRAMME STRUCTURE

YEAR 1

- Business in Context
- Principles of Accounting 1
- Principles of Management
- Microeconomics
- English for Academic Enrichment
- Bahasa Kebangsaan A
- Principles of Accounting 2
- Macroeconomics
- Principles of Finance
- Commercial Law
- Falsafah dan Isu Semasa / Bahasa Melayu Komunikasi 2
- Penghayatan Etika dan Peradaban
- Principles of Marketing
- Financial Accounting and Reporting 1
- Integrity and Anti-corruption

YEAR 2

- Company and Partnership Law
- Financial Accounting and Reporting 2
- Business Statistics
- Costing
- Leadership and Professional Development
- Financial Management
- Management Accounting
- Taxation I
- Corporate Financial Reporting 1
- AMUnited 2
- Taxation II
- Accounting Information Systems
- Management Information Systems

YEAR 3

- Corporate Financial Reporting II
- Principles of Auditing
- Corporate Finance
- Public Sector Accounting
- Elective 1
- Ethics, Governance & Professional Accountability
- Advanced Auditing
- Strategic Management
- Public Speaking and Presentation Skill
- Elective 2
- Industrial Training

YEAR 4

- Industrial Training
- Strategic Management Accounting
- Accounting Theory and Practice
- Elective 3
- Elective 4

Elective Subjects

- Islamic Banking and Finance
- Financial Markets and Institutions
- Investments Analysis
- Financial Derivatives
- Strategic Financial Analysis
- Change Management
- Project Management
- Knowledge Management

BACHELOR OF INFORMATION TECHNOLOGY (HONOURS)

(N/482/6/0215) MQA/PA 14329

About this programme

The programme aims to produce graduates with knowledge and skills to be responsive to any organization's computing needs and to support Information Technology application, in line with the national aspirations.

DURATION OF STUDY

3 years

MODE OF STUDY

Full Time

ENTRY REQUIREMENTS

- A pass in STPM with a minimum grade of C (CGPA 2.00) in any TWO (2) subjects; OR
- A pass in STAM with a minimum grade of Jayyid in any TWO (2) subjects; OR
- A pass in Matriculation or Foundation studies with a minimum CGPA of 2.00; OR
- Any other Diploma (Level 4, MQF) with a minimum CGPA of 2.75. Candidates with a CGPA below 2.75 but more than 2.00 may be admitted subject to a thorough internal evaluation process;
AND a credit in:
- Mathematics at SPM level or its equivalent; OR
- Candidates with a pass in Mathematics need to take reinforcement Mathematics with appropriate topics in the discipline of Information Technology and Information Systems at the beginning of the study. OR
- Diploma in Computing (Level 4, MQF) or equivalent with a minimum CGPA of 2.50. Candidates with a CGPA below 2.50 but more than 2.00 may be admitted subject to a thorough internal evaluation process; OR
- Any other Diploma in Science and Technology or Business Studies with a minimum CGPA of 2.5 may be admitted, subject to a rigorous internal assessment process and a credit in Mathematics at SPM level or its equivalent; OR
- Diploma Kemahiran Malaysia (DKM) / Diploma Vokasional Malaysia (DVM) in Computing fields with a minimum CGPA of 2.50 subjected to HEP Senate / Academic Board's approval; OR
- Diploma Lanjutan Kemahiran Malaysia (DLKM) in Computing fields with a minimum CGPA of 2.50 subjected to HEP Senate / Academic Board's approval. OR
- International Baccalaureate Diploma - Pass IB Diploma with Min. 26 points and above in 6 subjects including - Mathematics

ENGLISH COMPETENCY REQUIREMENT (INTERNATIONAL STUDENT)

Achieve a minimum score of 5.0 in the IELTS or equivalent. If a student does not meet this requirement, the HEP must offer English proficiency courses to ensure that the student's proficiency is sufficient to meet the needs of the programme.

Admission criteria through APEL.A :-

- At least 21 years of age in the year of application.
- Possess relevant work experience.
- Pass the APEL.A assessment for Bachelor's degree level

CAREER PROSPECTS

- Web Developer
- Business Intelligence Analyst
- Computer Support Specialist
- Customer Care Consultant
- IT Marketing Executive
- System Analyst

PROGRAMME STRUCTURE

YEAR 1

- Principles of Information Technology
- Discrete Mathematics
- Programming Concepts and Design
- Operating Systems
- Principles of Networking
- English for Academic Enrichment
- Information Systems Security
- Human Computer Interaction
- Database Systems
- Object Oriented Programming
- Penghayatan Etika Peradaban/ Bahasa Melayu Komunikasi 2
- Falsafah dan Isu Semasa/ Malaysian Studies 3
- Data Communication
- Web Page Design
- Integrity and Anti-Corruption

YEAR 2

- Computer Architecture
- Concurrent and Real Time Systems
- Emerging Technologies
- Web Application Development
- Public Speaking and Presentation Skills
- Leadership and Professional Development
- IT Service Management
- Systems Administration and Maintenance
- Integrative Programming and Technologies
- Social and Professional Responsibilities
- AMUnited 2
- Principle of Marketing

YEAR 3

- Knowledge Management
- Network Monitoring and Security
- System Development Tools and Techniques
- Platform Technologies
- Organisation Management
- Research Method
- Internship
- Malaysian Business Environment
- Information Technology Collaborative Project

SPECIALIZATION ELECTIVE SUBJECTS

- Business Process Integration
- Entrepreneurship
- Business Intelligence System
- Technology and Business Interaction
- Application and VB to E-Business
- Cyber Law

About this programme

Healthcare sector is one of the fastest growing industry in the world. Healthcare management offers attractive careers both in healthcare and business as it has a unique educational background. Asia Metropolitan University (AMU) is the first institute to offer the 4-year degree programme in Healthcare Management. It obtain the MQA Accreditation (Reg. No A 9630) since 24th November 2010 and has also been recognized by Jabatan Perkhidmatan Awam (Ref.no MO134723).

DURATION OF STUDY

4 years (8 semesters)

MODE OF STUDY

Full Time

ACADEMIC PATHWAYS

- Academician
- Healthcare Policy Professional
- Quality Control Officer
- Healthcare-entrepreneur
- Healthcare Department Manager
- Healthcare Finance Manager
- Quality and improvement Manager
- Healthcare Administrator

ENTRY REQUIREMENTS

Obtain MUET Band 3 or its equivalent; AND

- Pass Matriculation/Foundation/Asasi/STPM or an equivalent programme with a minimum CGPA of 2.33 in two of the following subjects:
 - i. Biology
 - ii. Physics/Mathematics
 - iii. Chemistry
- Pass GCE A Level with minimum Gred D in two of the following subject:
 - i. Biology
 - ii. Physics/Mathematics
 - iii. Chemistry
- Pass Diploma (Level 4 MQF) or its equivalent in a related field with a minimum CGPA of 2.75; OR
- Pass Diploma (Level 4 MQF) or its equivalent in a related field with a CGPA less than 2.75 can be accepted, with at least 3 years of working experience in the related field. OR
- International Baccalaureate Diploma - Pass IB Diploma with minimum 24 points in 6 subjects including 5 points at Higher Level (HL) in any two (2) subjects below:
 - i. Biology; and
 - ii. Chemistry; and
 - iii. Physics or Mathematics
- Pass DKM/DLKM/DVM in related field (Applicants are required to undergo screening and suitable enhancement programme relevant to the field of programme)

ENGLISH COMPETENCY REQUIREMENT (INTERNATIONAL STUDENT)

- Minimum score IELTS of 5.5 or equivalent

Admission criteria through APEL.A:-

- i. At least 21 years of age in the year of application.
- ii. Possess relevant work experience.
- iii. Pass the APEL.A assessment for Bachelor's degree level.

PROGRAMME STRUCTURE

YEAR 1

- Principles of Healthcare
- Human Anatomy and Physiology I
- Introduction to Psychology
- Communication Skills in Healthcare
- English for Academic Enrichment
- Bahasa Kebangsaan A (without SPM credit)
- Law and Ethics in Healthcare Management
- Human Anatomy and Physiology II
- Social Cultural Aspect in Healthcare
- Essentials of Medical Terminology
- Falsafah dan Isu Semasa(FIS)
- Penghayatan Etika dan Peradaban (PEP)

YEAR 2

- Accounting for Healthcare
- Disease Prevention I
- Health Informatics
- Healthcare Service and System in Malaysia
- Integrity and Anti-Corruption
- Disease Prevention II
- Health Finance and Economics
- Principles of Epidemiology
- Introduction to Pharmacology
- Leadership and Development

YEAR 3

- Health Safety and Risk Management
- Human Resource Management in Healthcare
- Organizational Behaviour and Development
- Complimentary Medicine/ Medical Tourism
- AMUnited II
- National Health Policy
- Hospital Management
- Research Methodology
- Strategic Management in Healthcare
- Interprofessional Learning/Pharmaceutical Management

YEAR 4

- Leadership and Conflict Management in Healthcare
- Emergency and Disaster Management
- Health Education and Promotion
- Quality Assurance in Healthcare
- Health Insurance/Introduction to Mandarin
- Research Project
- Industrial Training I (hospital)
- Industrial Training II (community)

BACHELOR OF BIOMEDICAL SCIENCE (HONS)

(R2/720/6/0122P) | (A10078)

About this programme

This programme aims to produce graduates who have a good foundation and experience in the field of Biomedical Science allowing them to do scientific work and research in the field of human health and disease. In addition to proficiency in medical laboratory procedures and operation techniques, a Biomedical Science graduate can also manage diagnostic, business and industrial laboratories.

DURATION OF STUDY

4 years

MODE OF STUDY

Full Time

ACADEMIC PATHWAYS

- Biomedical / Healthcare Scientist
- Academician
- Research Scientist (medical)
- Health Policy Professional
- Marketing of Medical Equipment
- Medical Science Liaison
- Application Specialist
- Medical Underwriter & Claim Officer
- Quality Control Officer
- Bio-entrepreneur

ENTRY REQUIREMENTS

Obtain MUET Band 3 or its equivalent; AND

- Pass Matriculation/Foundation/Asasi/STPM or an equivalent programme with a minimum CGPA of 2.33 in two of the following subjects:
 - i. Biology
 - ii. Physics/Mathematics
 - iii. Chemistry
- Pass GCE A Level with minimum Gred D in two of the following subject:
 - i. Biology
 - ii. Physics/Mathematics
 - iii. Chemistry
- Pass Diploma (Level 4 MQF) or its equivalent in a related field with a minimum CGPA of 2.75; OR
- Pass Diploma (Level 4 MQF) or its equivalent in a related field with a CGPA less than 2.75 can be accepted, with at least 3 years of working experience in the related field. OR
- International Baccalaureate Diploma - Pass IB Diploma with minimum 24 points in 6 subjects including 5 points at Higher Level (HL) in any two (2) subjects below:
 - i. Biology; and
 - ii. Chemistry; and
 - iii. Physics or Mathematics
- Pass DKM/DLKM/DVM in related field (Applicants are required to undergo screening and suitable enhancement programme relevant to the field of programme)

ENGLISH COMPETENCY REQUIREMENT (INTERNATIONAL STUDENT)

Minimum score IELTS of 5.5 or equivalent

Admission criteria through APEL.A:-

- i. At least 21 years of age in the year of application.
- ii. Possess relevant work experience.
- iii. Pass the APEL.A assessment for Bachelor's degree level.

PROGRAMME STRUCTURE

YEAR 1

- Organic Chemistry
- Anatomy and Physiology I
- Falsafah dan Isu Semasa (FIS)
- Biochemistry
- Laboratory Techniques
- Laboratory Instrumentation
- Penghayatan Etika dan Peradaban (PEP)
- Basic Microbiology
- English for Academic Enrichment
- Leadership and Professional Development
- Anatomy and Physiology II
- Medical Biochemistry

YEAR 2

- Clinical Microbiology
- Immunology and Serology
- Cell Biology
- Blood Banking and Transfusion Science
- Integrity and Anti-Corruption
- Epidemiology
- Molecular Biology
- Basic Pathology
- Basic Hematology
- Biostatistics
- AMUnited 2

YEAR 3

- Medical Entomology
- Medical Parasitology
- Clinical Pathology
- Laboratory Management
- Research Methodology
- Histocytopathology
- Biomedical Diagnostic I
- Pharmacology
- Research Project I
- Strategic Planning and Marketing in Healthcare Services
- Occupational Health and Safety
- Pathophysiology

YEAR 4

- Biomedical Diagnostic II
- Research Project II
- Toxicology/Neuropharmacology
- Interprofessional Learning /Critical Thinking
- Introduction to Mandarin /Health insurance
- Industrial Training I
- Industrial Training II

About this programme

Master of Science in Healthcare Management is a programme tailored for individuals looking to become world-class leaders in healthcare management and hospital administration. The student will achieve this by developing excellent decision-making, problem solving skills and passionate with a desire to lead health organisations through challenges. The course structure have been designed specifically for the health services sector with a focus on the current technology

DURATION OF STUDY

18 months

MODE OF STUDY

Full time & Part Time

ENTRY REQUIREMENTS

1. A bachelor's degree in the field or related fields with a minimum CGPA of 2.50 or equivalent, as accepted by the HEP Senate; OR
2. A bachelor's degree in the field or related fields or equivalent with a minimum CGPA of 2.00 and not meeting a CGPA of 2.50, can be accepted subject to rigorous internal assessment.
3. Candidates without a qualification in the related fields or working.
4. Experience in the relevant fields must undergo appropriate prerequisite courses determined by the HEP and meet the minimum CGPA based on (1) to (2).

ENGLISH COMPETENCY REQUIREMENT (INTERNATIONAL STUDENT)

Achieve a minimum of Band 4 in MUET OR equivalent to CEFR (Mid B2)**

- IELTS: 6.0
- TOEFL iBT: 60
- Pearson Test of English: 59
- Cambridge English Qualifications and Test: 169

Admission criteria through APEL.A:-

- i. At least 30 years of age in the year of application.
- ii. Possess at least an STPM/Diploma/equivalent qualification** (or those with higher qualifications, e.g., Advanced Diploma, Graduate Certificate, Graduate Diploma);
- iii. Possess relevant work experience.
- iv. Pass the APEL.A assessment for Master's level.

CAREER PROSPECTS

- Hospital Managers
- Clinical Services Management
- Pharmaceutical Industry Management
- Aged Care Centre/Retirement Homes
- Health Insurance Claims/Billing Specialist
- Medical Tourism
- Academicians

PROGRAMME STRUCTURE

SEMESTER 1

- Management and Governance in Healthcare Industry
- Healthcare System In Malaysia
- Research Methodology
- Healthcare Human Resource Management
- Healthcare Economic

SEMESTER 2

- Healthcare Information System
- Accounting and Finance for Healthcare
- Healthcare Marketing
- Epidemiology
- Health Promotion in Healthcare / Strategic Management in Healthcare

SEMESTER 3

- Research Project
- Entrepreneurship in Healthcare/Healthcare Operation Management

About this programme

The MBA programme provide learners with a balanced insight into the challenges of managing businesses. The modern day manager needs to have a broad understanding of the various functions within an organization in order to effectively meet the organizational goals and objectives. In addition to this, the rapid expansion of international trade is leading suppliers; customers and work colleagues to work within a multicultural working environment. This in turn, requires a different set of skills to be able to manage both effectively and efficiently.

DURATION OF STUDY

Full Time : 1.5 Year
Part Time : 2 Years

MODE OF STUDY

Coursework

ENTRY REQUIREMENTS

- i. A Bachelor's degree (Level 6, MQF) in related fields with a minimum CGPA of 2.50 as accepted by the HEP Senate; OR
- ii. A Bachelor's degree (Level 6, MQF) in related fields with a minimum CGPA of 2.00 and not meeting CGPA of 2.50 can be accepted, subject to a rigorous internal assessment****; OR
- iii. A Bachelor's degree (Level 6, MQF) in non-related fields with a minimum CGPA of 2.00 as accepted by the HEP Senate and with relevant working experience****, subject to a rigorous internal assessment****; OR
- iv. A Bachelor's degree (Level 6, MQF) in non-related fields with a minimum CGPA of 2.00 as accepted by the HEP Senate and without relevant working experience, subject to passing pre-requisite courses*****; OR
- v. Other equivalent/related qualifications to a Bachelor's degree (Level 6, MQF) recognized by the Malaysian Government

ENGLISH COMPETENCY REQUIREMENT (INTERNATIONAL STUDENT)

Achieve a minimum of Band 4 in MUET OR equivalent to CEFR (Mid B2).

Admission criteria through APEL.A:- Programme at MQF Level 7:

- i. At least 30 years of age in the year of application.
- ii. Possess at least an STPM/Diploma/equivalent qualification** (or those with higher qualifications, e.g., Advanced Diploma, Graduate Certificate, Graduate Diploma);
- iii. Possess relevant work experience.
- iv. Pass the APEL.A assessment for Master's level.

CAREER PROSPECTS

- Entrepreneur
- General Manager
- HR Manager
- Product Manager
- Marketing Manager
- Medical & Health Services Manager
- Senior Manager
- Project Manager or Senior Consultant
- Operations Research Analyst
- Corporate Planner
- Director - Technology Account Management

PROGRAMME STRUCTURE

CORE

- Marketing Management
- Human Resource Management
- Accounting for Managers
- Managerial Economics
- Research Methodology

MAJOR

- Organisational Behaviour
- Business Informatics
- Business Statistics
- Corporate Finance

ELECTIVE (CHOOSE 2)

- Operations Management
- Total Quality Management
- International Business

PROJECT

- Project Paper

ASSESSMENT

- Continuous Assessment
- Final Examination

MBA PROJECT PAPER

The MBA Project module provides you with an opportunity to apply the skills and knowledge that you have acquired to the resolution of a business problem, or to research an area of interest. Our work-based project it is a great opportunity to work on a live management issue and to forge and develop links with employers and industry including that of your own. If you aspire to be an entrepreneur, the MBA Project can be an excellent opportunity to compile a comprehensive business plan.

MASTER IN BUSINESS ADMINISTRATION (HUMAN RESOURCE MANAGEMENT)

(R/345/7/0880) | (FA4567)

About this programme

The MBA (HRM) programme provide learners with a balanced insight into the challenges of managing businesses. The modern day manager needs to have a broad understanding of the various functions within an organization in order to effectively meet organizational goals and objectives. In addition to this, the rapid expansion of international trade is leading suppliers; customers and work colleagues to work within a multicultural working environment. This in turn, requires a different set of skills to be able to manage both effectively and efficiently.

DURATION OF STUDY

Full Time : 1.5 Year
Part Time : 2 Years

MODE OF STUDY

Coursework

ENTRY REQUIREMENTS

- i. A Bachelor's degree (Level 6, MQF) in related fields with a minimum CGPA of 2.50 as accepted by the HEP Senate; OR
- ii. A Bachelor's degree (Level 6, MQF) in related fields with a minimum CGPA of 2.00 and not meeting CGPA of 2.50 can be accepted, subject to a rigorous internal assessment****; OR
- iii. A Bachelor's degree (Level 6, MQF) in non-related fields with a minimum CGPA of 2.00 as accepted by the HEP Senate and with relevant working experience****, subject to a rigorous internal assessment****; OR
- iv. A Bachelor's degree (Level 6, MQF) in non-related fields with a minimum CGPA of 2.00 as accepted by the HEP Senate and without relevant working experience, subject to passing pre-requisite courses*****; OR
- v. Other equivalent/related qualifications to a Bachelor's degree (Level 6, MQF) recognized by the Malaysian Government

ENGLISH COMPETENCY REQUIREMENT (INTERNATIONAL STUDENT)

Achieve a minimum of Band 4 in MUET OR equivalent to CEFR (Mid B2).

Admission criteria through APEL.A:-

- i. At least 30 years of age in the year of application.
- ii. Possess at least an STPM/Diploma/equivalent qualification** (or those with higher qualifications, e.g., Advanced Diploma, Graduate Certificate, Graduate Diploma);
- iii. Possess relevant work experience.
- iv. Pass the APEL.A assessment for Master's level.

CAREER PROSPECTS

- Human Resources Manager
- Senior Human Resources Consultant
- Manager, HR Operations
- Director of Employee Experience & Communications
- Director of Global Engagement and Culture
- Employee Relations Manager
- Human Capital Managers

PROGRAMME STRUCTURE

Core

- Marketing Management
- Human Resource Management
- Accounting for Managers
- Managerial Economics
- Research Methodology

Major

- Strategic Human Resource Management
- Human Resource Development
- Training and Development
- Compensation and Benefits Management
- Industrial Relations and Labour Law

Elective (choose 2)

- Managing Occupational Safety and Health
- Performance Management and Reward Systems
- Workforce Diversity Management

Project

- Project Paper

ASSESSMENT

- Continuous Assessment
- Final Examination

MASTER PROJECT

The MBA (HRM) Project module provides you with an opportunity to apply the skills and knowledge that you have acquired to the resolution of a business problem, or to research an area of interest. Our work-based project it is a great opportunity to work on a live management issue and to forge and develop links with employers and industry including that of your own. If you aspire to be an entrepreneur, the MBA Project can be an excellent opportunity to compile a comprehensive business plan.

About this programme

The MBA ODL programme at Asia Metropolitan University (AMU) provides theoretical and practical training for those aspiring to be business leaders and entrepreneurs. The programme provide participants with the skills to apply both traditional and cutting-edge business principles to the current real-world challenges. Distinctive time-tested pedagogies and a case study approach with industry leaders makes the programme unique. The flexible and customised mode of learning ensures your work and personal routines are not interrupted. You learn at your own pace from your place at an affordable price.

DURATION OF STUDY

Full Time : 1 Year (minimum) 2 Years (Maximum)
Part Time : 1.5 years (minimum) 2 Years (Maximum)

MODE OF STUDY

Coursework

ENTRY REQUIREMENTS

- i. A Bachelor's degree (Level 6, MQF) in related fields with a minimum CGPA of 2.50 as accepted by the HEP Senate; OR
- ii. A Bachelor's degree (Level 6, MQF) in related fields with a minimum CGPA of 2.00 and not meeting CGPA of 2.50 can be accepted, subject to a rigorous internal assessment****; OR
- iii. A Bachelor's degree (Level 6, MQF) in non-related fields with a minimum CGPA of 2.00 as accepted by the HEP Senate and with relevant working experience****, subject to a rigorous internal assessment****; OR
- iv. A Bachelor's degree (Level 6, MQF) in non-related fields with a minimum CGPA of 2.00 as accepted by the HEP Senate and without relevant working experience, subject to passing pre-requisite courses*****; OR
- v. Other equivalent/related qualifications to a Bachelor's degree (Level 6, MQF) recognized by the Malaysian Government

ENGLISH COMPETENCY REQUIREMENT (INTERNATIONAL STUDENT)

Achieve a minimum of Band 4 in MUET OR equivalent to CEFR (Mid B2).

Admission criteria through APEL.A :-

- i. At least 30 years of age in the year of application.
- ii. Possess at least an STPM/Diploma/equivalent qualification** (or those with higher qualifications, e.g., Advanced Diploma, Graduate Certificate, Graduate Diploma);
- iii. Possess relevant work experience.
- iv. Pass the APEL.A assessment for Master's level.

CAREER PROSPECTS

- Entrepreneur
- General Manager
- HR Manager
- Product Manager
- Marketing Manager
- Medical & Health Services Manager
- Senior Manager
- Project Manager or Senior Consultant
- Operations Research Analyst
- Corporate Planner
- Director - Technology Account Management

PROGRAMME STRUCTURE

- Strategic Human Resource Management
- Marketing Management in the Digital Age
- Organizational Behaviour and Leadership
- Managerial Economics
- Accounting and Financial Management for Decision Making
- Business Intelligence & Analytics
- Business Research Method
- Entrepreneurship and Innovation
- Strategic Management and Ethics
- Supply Chain and Operations Management
- Global Business Strategy
- Project Management
- Masters project

ASSESSMENT

- Continuous Assessment
- Final Examination

DELIVERY

- Online classes: 10 hours
- Self-learning through LMS Platform: 65 hours
- Preparation of Assignment & Examination: 45 hours

CMI DUAL ACCREDITATION AND AFFILIATE MEMBERSHIP (optional)



Upon fulfilment of graduation, AMU students will receive the CMI, UK Accredited MBA degree and an additional prestigious Level 7 Diploma in Strategic Management and Leadership Practice Certificate from the Chartered Management Institute (CMI).

MEMBERSHIP BENEFITS

- CMI Affiliate Membership
- Career Development Centre
- Mentoring Service
- Certificate

CMI FEE: RM2,500.00*

*Terms & conditions apply

About this programme

The Doctor of Business Administration programme aims at advancing leadership. The programme primarily focuses on theories and methodologies related to research and practice, comprehensive study, processes as well as the best practices in business management. Students of this programme will develop business acuity and at the same time, enhance their overall management capabilities. This programme offers a blend of taught courses, workshops/seminars/ colloquiums and supervised research to help students improve their disciplinary professional business and management knowledge. This programme offers a blend of taught courses, workshops/seminars/ colloquiums and supervised research to help students improve their disciplinary professional business and management knowledge.

DURATION OF STUDY

Full Time : 3 Years (Minimum) 6 Years (Maximum)
Part Time: 5 Years (Minimum) 8 Years (Maximum)

MODE OF STUDY

Coursework & Dissertation

ASSESSMENT

- Continuous Assessment
- Final Examination
- Dissertation

ENTRY REQUIREMENTS

- A Master's degree (Level 7, MQF) in related fields as accepted by the HEP Senate; OR
- A Master's degree (Level 7, MQF) in nonrelated fields as accepted by the HEP Senate, subject to having relevant working experience***** and rigorous internal assessment****; OR
- A Master's degree (Level 7, MQF) in nonrelated fields as accepted by the HEP Senate and without relevant working experience, subject to passing prerequisite courses*****; OR
- Other qualifications equivalent to a Master's degree (Level 7, MQF) recognised by the Malaysian Government

ENGLISH COMPETENCY REQUIREMENT (INTERNATIONAL STUDENT)

- Achieve a minimum of Band 4 in MUET OR equivalent to CEFR (Mid B2)

Admission criteria through APEL.A:-

- At least 35 years of age in the year of application.
- Possess at least a Bachelor's degree or equivalent qualifications (or those with higher qualifications, e.g., Postgraduate Certificate, Postgraduate Diploma).
- Possess at least 5 years of relevant work experience after completion of the Bachelor's degree programme.
- Pass the APEL.A assessment for Doctorate level.

PROGRAMME STRUCTURE

Year 1 Trimester 1

- Strategic Marketing
- Economic Analysis for Managers
- Advanced Global Business
- Managerial Finance

Year 1 Trimester 2

- Organizational Leadership
- Advanced Human Resource Management
- Seminar in Managerial Accounting
- Advanced Research Methodology

Year 1 Trimester 3

- Advanced Statistic
- Decision Making Analysis
- Advanced Strategic Management
- Consultation Project

Year 2 Trimester 1

- Consultation Project 2
- Dissertation - Proposal Defence

Year 2 Trimester 2

- Dissertation - Data Analysis

Year 2 Trimester 3

- Dissertation - Data Analysis

Year 3 Trimester 1

- Dissertation - Write-up

Year 3 Trimester 2

- Dissertation - Write-up

Year 3 Trimester 3

- Dissertation - Viva Voce

DOCTOR OF PHILOSOPHY IN MANAGEMENT (PHD)

(R2/0414/8/0021) | (MQA/FA10029)

About this programme

The Doctor of Philosophy in Management (PhD) programme equips graduates to become transformative leaders who shape the future of management. The programme primarily focuses on theories and methodologies related to research and practice, comprehensive study, processes as well as the best practices in business management. Students of this programme will develop business acuity and at the same time, enhance their overall management capabilities.

DURATION OF STUDY

Full Time: 3 Years (Minimum) 6 Years (Maximum)
Part Time: 4 Years (Minimum) 8 Years (Maximum)

MODE OF STUDY

Full Research

ENTRY REQUIREMENTS

- A Master's degree (Level 7, MQF) in related fields as accepted by the HEP Senate; OR
- A Master's degree (Level 7, MQF) in nonrelated fields as accepted by the HEP Senate, subject to having relevant working experience***** and rigorous internal assessment****; OR
- A Master's degree (Level 7, MQF) in nonrelated fields as accepted by the HEP Senate and without relevant working experience, subject to passing prerequisite courses*****; OR
- Other qualifications equivalent to a Master's degree (Level 7, MQF) recognised by the Malaysian Government

ENGLISH COMPETENCY REQUIREMENT (INTERNATIONAL STUDENT)

- Achieve a minimum of Band 4 in MUET OR equivalent to CEFR (Mid B2)

Admission criteria through APEL.A:-

- At least 35 years of age in the year of application.
- Possess at least a Bachelor's degree or equivalent qualifications (or those with higher qualifications, e.g., Postgraduate Certificate, Postgraduate Diploma).
- Possess at least 5 years of relevant work experience after completion of the Bachelor's degree programme.
- Pass the APEL.A assessment for Doctorate level.

GUIDED PROGRAMME STRUCTURE

Year 1

Semester 1

- Advanced Research Methodology

Semester 2

- Preparation of Research Proposal

Year 2

Semester 3

- Thesis Write-up
- Proposal Defence

Semester 4

- Thesis Write-up
- Research and Data Collection

Year 3

Semester 5

- Thesis Write-up

Semester 6

- Thesis Submission and Viva Voce

WHAT WILL YOU LEARN

- Relevant effective and efficient management to the society.
- Management policies and developmental plans for an organization.
- Formulate, implement and evaluate research studies in the field of Management.
- Enhance relevant management skills to broaden academic knowledge in management.

About this programme

The Industry related PhD offers an alternative path for industry professionals who wish to pursue a PhD without leaving their current position. The purpose of this program is to facilitate the exchange of information between academics and industry professionals in order to develop highly qualified professionals. In return, the university has access to new knowledge and innovation provided by private companies.

DURATION OF STUDY

Full Time : 2 Years (Minimum) 6 Years (Maximum)
Part Time: 3 Years (Minimum) 8 Years (Maximum)

MODE OF STUDY

Full Research

ENTRY REQUIREMENTS

- A Master's degree (Level 7, MQF) in related fields as accepted by the HEP Senate; OR
- A Master's degree (Level 7, MQF) in nonrelated fields as accepted by the HEP Senate, subject to having relevant working experience**** and rigorous internal assessment****; OR
- A Master's degree (Level 7, MQF) in nonrelated fields as accepted by the HEP Senate and without relevant working experience, subject to passing prerequisite courses*****; OR
- Other qualifications equivalent to a Master's degree (Level 7, MQF) recognised by the Malaysian Government

ENGLISH COMPETENCY REQUIREMENT (INTERNATIONAL STUDENT)

- Achieve a minimum of Band 4 in MUET OR equivalent to CEFR (Mid B2)

Admission criteria through APEL.A:-

- At least 35 years of age in the year of application.
- Possess at least a Bachelor's degree or equivalent qualifications (or those with higher qualifications, e.g., Postgraduate Certificate, Postgraduate Diploma).
- Possess at least 5 years of relevant work experience after completion of the Bachelor's degree programme.
- Pass the APEL.A assessment for Doctorate level.

PROGRAMME STRUCTURE

No.	Program Structure	Duration Months	Proportion of the Study
1	Topic Analysis Report	9 months	25%
2	Research Proposal	9 months	25%
3	Thesis	18 months	50%

No.	Specialisation	Generalisation
1	Logistics, Customer Relations and Communications	Client Needs
2	Intellectual Development	Company Knowledge
3	Disaster Management	Conflict Management
4	International Labour Relations	Managing Diverse Workforce
5	Dynamic Capability	Training and Development
6	Operational Management, Product Reliability	Quality Assurance
7	Rehabilitation at work place	Industrial Relations
8	Industry and Community, Corporate Sustainability	Corporate Social Responsibility and Business
9	Organization Communications, Job Satisfaction, Employee Well Being	Organizations at Work

WHY CHOOSE DOCTOR OF PHILOSOPHY PROGRAMME?

- Research is conducted at the industry and candidates do not have to leave their work place.
- Joint supervision by experts from the Industry and the University.
- The company benefits from access to new/innovative and valuable knowledge acquired by the student/ researcher during his or her studies at the University.

POST GRADUATE CERTIFICATE IN TEACHING METHODOLOGY

(R2/145/7/0012) | (MQA/FA0866)

About this programme

Post Graduate Certificate In Teaching Methodology (PGCTM) is a programme to help develop the ability to apply and utilize a range of teaching approaches that will enhance the effectiveness of teaching and learning, both in the theoretical and practical aspects. This programme equips students with the knowledge and skills they need to succeed, regardless of their academic background, by providing a tailored learning experience that adapts to their individual needs and goals. PGCTM programme is classified as MQF (Malaysian Qualification Framework) level 7 whereby its competency is equivalent of Masters level.

DURATION OF STUDY

Full time: 9 months

Part time: 12 months

MODE OF STUDY

coursework and practicum

ENTRY REQUIREMENTS

- A Bachelor's Degree or its equivalent, with a minimum CGPA of 2.50, as accepted by the HEP's Senate; OR
- A Bachelor's Degree or its equivalent, not meeting CGPA of 2.50, can be accepted subject to a minimum of five (5) years working experience in a relevant field.

ENGLISH COMPETENCY REQUIREMENT (INTERNATIONAL STUDENT)

- Achieve a minimum of Band 4 in MUET OR equivalent to CEFR (Mid B2)

Admission criteria through APEL.A:-

- At least 30 years of age in the year of application.
- Possess at least an STPM/Diploma/equivalent qualification** (or those with higher qualifications, e.g., Advanced Diploma, Graduate Certificate, Graduate Diploma);
- Possess relevant work experience.
- Pass the APEL.A assessment for Master's level.

CAREER PROSPECTS

- Lecturer
- School Teacher
- Private Tutor
- Curriculum Developer
- Administrator

PROGRAMME STRUCTURE

Semester 1

- Foundation In Teaching & Learning
- Teaching Methodology
- Student Assessment System
- Curriculum Planning & Management
- Micro & Macro Teaching
- .

Semester 2

- Teaching Practicum

WHAT WILL YOU LEARN

- Teaching approaches
- Teaching effectiveness
- Academic proficiency



Contact Information :



Whatsapp
+6012 237 0925



Website
amu.edu.my



Email Address
info@amu.edu.my



Office Addresses

**Asia Metropolitan University
Bandar Seri Alam, Johor**
No.6, Jalan Lembah, Bandar
Seri Alam, 81750 Johor Bahru,
Malaysia
+607-3861 076

**Asia Metropolitan University
Cyberjaya Campus, Selangor**
Level 1 Tower Block, Pesiaran
Bestari, Cyber 11,
63000 Cyberjaya
+603-8313 7172

Stay connected with us on social media!



ASIA Metropolitan University



Asia Metropolitan University



asiametropolitanuni



Asia Metropolitan University